

JANUARY 2025  
\$2.50



### MEEKA COMMUNITY AWARDS 2025

*Join us for the Awards  
Ceremony and the  
announcement of the  
successful winners.*

*Sunday 26th January,  
2025*

*Doors open from 10:00am*

*Shire Hall  
Refreshments provided  
All welcome!*



## **SCHEDULE OF MEETING DATES, TIMES AND LOCATIONS**

*JANUARY – DECEMBER 2025*

### **ORDINARY MEETINGS OF COUNCIL**

In accordance with section 5.25(1)(g) of the *Local Government Act 1995* and regulation 12 of the *Local Government (Administration) Regulations 1996* the scheduled Shire of Meekatharra Ordinary Meeting dates for 2025 calendar year are as follows:

**Saturday, 18 January 2025**

**Saturday, 15 February 2025**

**Saturday, 15 March 2025**

**Saturday, 12 April 2025**

**Saturday, 17 May 2025**

**Saturday, 21 June 2025**

**Saturday, 26 July 2025**

**Saturday, 16 August 2025**

**Saturday, 20 September 2025**

**Saturday, 18 October 2025**

**Saturday, 15 November 2025**

**Friday, 12 December 2025**

All meetings are held in Council Chambers located at the corner Main & Savage Streets Meekatharra and commence at 11.30am (except the 12 December 2025 meeting which commences at 4:00pm).

### **AUDIT COMMITTEE MEETINGS**

Audit Committee Meetings will be arranged as required in consultation with the Shire President.

**Nathan Cain**

**Acting Chief Executive Officer**

## **Acknowledgement of Country**

The Shire of Meekatharra acknowledges the Traditional Owners of Country throughout this region, and recognises the continuing connection to lands, waters and communities.

We pay our respect to Aboriginal and Torres Strait Islander cultures; and to Elders past and present.

### **GENERAL DISCLAIMER**

The opinions expressed have been published in good faith on the request of the person requesting publication, and are not those of the Shire of Meekatharra. All articles, comments, advice and other material contained in this publication are by way of general comment or advice only and are not intended, nor do they purport to be the correct advice on any particular matter or subject referred to. No person should act on the basis of any matter, comment or advice contained in this publication without first considering, and if necessary taking appropriate professional advice upon the applicability to their particular circumstances. Accordingly, no responsibility is accepted or taken by the Shire of Meekatharra, or the authors and editors of the Meekatharra Dust, for any damage or loss suffered by any party acting in reliance on any matter, comment or advice contained herein.



# Contents

## INTRODUCTION -----

- Acknowledgement of Country
- Council Meeting Schedules
- Disclaimer

## COMMUNITY HAPPENINGS -----

- What's Happening | Meeka Community Awards
- Youth Services in January
- First Aid Training
- Community Facilities

## LIFESTYLE -----

- Service Provider Information
- Health | Cancer Council Health Message
- Information | Regional Column from Consumer Protection
- Gardening | Tips from Backyard Buddies
- Travel | What's Happening in the Region
- Calendar of Happenings
- Recipe of the Month | Fruits of the Forest Yoghurt Compote
- Aboriginal Justice Open Day

## CLASSIFIED ADS & MISC -----

- Advertising in the Dust
- Activities | Word Search, Sudoku, Coloring Sheet

WE WOULD LOVE TO HEAR FROM  
YOU SO PLEASE FEEL FREE TO CONTACT US ON

**08 9980 0600**

AND ASK FOR THE COMMUNITY DEVELOPMENT OFFICER,  
OR EMAIL;

**CDO@MEEKASHIRE.WA.GOV.AU**

OR GIVE US A FOLLOW ON OUR SOCIALS



Scan me!







## **For Sale by Tender**

**RFT 2025-01**

### **1 x 2003 Caterpillar 12H Motor Grader**

The Shire of Meekatharra seeks tender submissions from interested parties for the purchase and removal of 1 x 2003 Caterpillar 12H Motor Grader (1BID-657) in working order.

Further details can be downloaded from [www.meekashire.wa.gov.au](http://www.meekashire.wa.gov.au)

Tenders must be submitted by email to [tenders@meekashire.wa.gov.au](mailto:tenders@meekashire.wa.gov.au)

Written submissions must be received no later than 2:00 pm (WST) Wednesday 26 February 2025.

The highest or any tender shall not necessarily be accepted. Canvassing of Councillors will disqualify.

**Nathan Cain**

**Acting Chief Executive Officer**



**Community**



**Happenings**

WHAT'S CURRENTLY HAPPENING IN MEEKA?



**MEEKA COMMUNITY AWARDS | Sunday 26 Jan**

**Community  
Member  
of the Year**

SHIRE OF MEEKATHARRA

# COMMUNITY AWARDS 2025

**Join us for the  
Community  
Awards  
Ceremony**

*Sunday 26th January 2025  
10am - 12pm  
Shire Hall*

**Community  
Contributor  
or Event  
of the Year**

**Senior  
of the  
Year**

*(60yrs and above)*

**Young  
Person  
of the Year**

*(24yrs and under)*

# COMMUNITY HAPPENINGS | Meeka Community Awards 2025

**Community  
Member  
of the Year**

**Young  
Person  
of the Year**  
*(24yrs and under)*

**Senior  
of the Year**  
*(60yrs and above)*

**Community  
Contributor  
or Event  
of the Year**

## Community Awards Ceremony to Celebrate Local Achievements

The Meeka Community Awards Ceremony is set to take place on Sunday, 26th January, bringing together local residents to celebrate the outstanding contributions and achievements of individuals and groups within the community.

This special event will be hosted at the Shire Hall on Australia Day, offering an opportunity for everyone to gather in a spirit of appreciation and unity.




-  **Shire Hall**
-  **Sunday, 26th January**
-  **10:00am Doors Open**  
*Awards Ceremony starts at 10:30am*

The awards ceremony honours the community's most dedicated individuals and groups. Recognition is given to those who have gone above and beyond in fields ranging from local volunteer work, paid employment, cultural contributions and community efforts.

These awards are a chance to acknowledge the many people who help make our community stronger, more inclusive, and vibrant.

After the formal ceremony, celebrations will continue with free entry to the Pool and a BBQ lunch from 12:00pm. The pool will be open to all, offering a refreshing way to cool off and unwind. All children under the age of 10yrs must be accompanied by a responsible adult.

## Free pool entry and BBQ lunch

-  **Meekatharra War Memorial Pool**
-  **Sunday, 26th January**
-  **12:00pm - 3:00pm**  
*BBQ lunch from 12:00pm - 1:00pm*





# COMMUNITY HAPPENINGS | Youth Services!

## JANUARY 2025 YOUTH SERVICES

For more information please contact Kadi on 0475 391 517 between 8am and 8pm

### 13th Jan - 17th Jan 2025

#### MONDAY

**12PM - 3PM**

YOUTH  
CENTRE  
DROP IN

**6PM - 8PM**

YOUTH  
CENTRE  
QUIZ NIGHT

#### TUESDAY

**12PM - 3PM**

YOUTH  
CENTRE  
DROP IN

**6PM - 8PM**

BASKETBALL  
AT OVAL

#### WEDNESDAY

**12PM - 3PM**

YOUTH  
CENTRE  
DROP IN

**6PM - 8PM**

FOOTBALL AT  
OVAL

#### THURSDAY

**12PM - 3PM**

YOUTH  
CENTRE  
DROP IN

**6PM - 8PM**

CRICKET AT  
OVAL

#### FRIDAY

**12PM - 3PM**

YOUTH  
CENTRE  
DROP IN

**6PM - 8PM**

YOUTH  
CENTRE  
MOVIE NIGHT

### 20th Jan - 24th Jan 2025

#### MONDAY

**12PM - 3PM**

YOUTH  
CENTRE  
DROP IN

**6PM - 8PM**

YOUTH  
CENTRE  
QUIZ NIGHT

#### TUESDAY

**12PM - 3PM**

YOUTH  
CENTRE  
DROP IN

**6PM - 8PM**

BASKETBALL  
AT OVAL

#### WEDNESDAY

**12PM - 3PM**

YOUTH  
CENTRE  
DROP IN

**6PM - 8PM**

FOOTBALL AT  
OVAL

#### THURSDAY

**12PM - 3PM**

YOUTH  
CENTRE  
DROP IN

**6PM - 8PM**

CRICKET AT  
OVAL

#### FRIDAY

**12PM - 3PM**

YOUTH  
CENTRE  
DROP IN

**6PM - 8PM**

YOUTH  
CENTRE  
MOVIE NIGHT

### 27th Jan - 31st Jan 2025

#### MONDAY

**YOUTH  
SERVICES  
CLOSED**

**PUBLIC  
HOLIDAY**

#### TUESDAY

**12PM - 3PM**

YOUTH  
CENTRE  
DROP IN

**6PM - 8PM**

BASKETBALL  
AT OVAL

#### WEDNESDAY

**12PM - 3PM**

YOUTH  
CENTRE  
DROP IN

**6PM - 8PM**

FOOTBALL AT  
OVAL

#### THURSDAY

**12PM - 3PM**

YOUTH  
CENTRE  
DROP IN

**6PM - 8PM**

CRICKET AT  
OVAL

#### FRIDAY

**YOUTH  
SERVICES  
CLOSED**





**St John**

We need you



## New Volunteers Urgently Needed

- Help with attending and driving to 000 calls
- Checking ambulance stock
- Transporting to RFDS

For more information call or email the  
community paramedic  
0437681562  
[cp.midwesteast@stjohnhwa.com.au](mailto:cp.midwesteast@stjohnhwa.com.au)

*Join Now*





**St John**

# Upcoming first aid course

## HLTAID011 - Provide First Aid

**Course type:** Accredited | **Duration:** 1 day in class + Online learning

**Price:** \$170.00

**When:** Sunday 23 February - 8:30AM - 4:30PM

**Where:** Lloyds Plaza Conference Room, 64-66 Main Street, Meekatharra WA 6642



### **Understand first aid**

Learn about first aid theory and action plans



### **CPR and defibrillation**

Practise CPR skills and how to apply a defibrillator.



### **Injury management**

Treat and manage injuries in interactive training scenarios.



## Ready to make a difference?

Book a first aid course with us



**St John First Aid Training**



**St John**

# Upcoming first aid courses

## HLTAID011 - Provide First Aid

**Course type:** Accredited | **Duration:** 2 days in class

**Price:** \$275.00

**When:** Monday 24 February - 8:30AM - 4:30PM  
Tuesday 25 February - 8:30AM - 4:30PM

**Where:** To be advised, Cue WA 6640



### Understand first aid

Everything you need to know about first aid theory and action plans.



### CPR and defibrillation

Put into practise your CPR skills and defibrillation technique.



### Injury management

Bolster treatment skills in an interactive training scenario.



## Ready to make a difference?

Book a first aid course with us



**St John First Aid Training**





## **I'm Jenna Denton, your WA Labor candidate for Mid West**

I'm proud to raise my family in the Mid-West, a region I've called home my whole life. I've dedicated my career to serving the Mid-West, creating and managing regional services.

I'll always do what's right by our region, building on WA Labor's plan, delivering cost of living relief, and tackling social and housing challenges.


Our region deserves a representative who is present, active, and delivers for our region. I'm committed to giving the Mid-West a strong voice in Parliament.



**DOING  
WHAT'S  
RIGHT  
FOR WA**

**Jenna Denton**

WA Labor for **Midwest**

  JennaDentonMidwest  
 jenna.denton@walabor.org.au  
 walabor.org.au





# COMMUNITY FACILITIES

## Available in Town

### LLOYDS CONFERENCE ROOM

Lloyds Plaza Conference Room is a state-of-the-art conferencing facility set to accommodate up to a maximum of 25 people. *Hire fees are \$12.50 (including GST) per hour, minimum of 4 hours hire.*

This facility **can be booked online**. Alternatively, please contact us directly at **9980 0600** or email us at **[cso@meekashire.wa.gov.au](mailto:cso@meekashire.wa.gov.au)**



Lloyds Plaza Conference Room

### TOWN HALL

One of the most important buildings in our town, our beloved Town Hall is a multi-purpose space where your team, or family can utilize to whatever way you think it'll fit. This space can accommodate up to 250 people.

This facility cannot be booked online.

Please contact us directly at **9980 0600** or email us at **[cso@meekashire.wa.gov.au](mailto:cso@meekashire.wa.gov.au)** for any enquiries or bookings.



Town Hall

### SPORTING COMPLEX AND OVAL

Looking for a space to use for a big event in town?

The Sporting Complex and Oval might be the space for you. With it's luscious grass and wide field, accompanied with an indoor space to keep shade when needed, this space can accommodate up to 50 people indoors.

This facility cannot be booked online.

Please contact us directly at **9980 0600** or email us at **[cso@meekashire.wa.gov.au](mailto:cso@meekashire.wa.gov.au)** for any enquiries or bookings.



Sporting Complex and Oval





## GYM

The gym is located at the Sporting Complex off Landor Road behind the Club Rooms and can be accessed between 5am-10pm.

This unmanned gym has all the equipment you will need and more to complete your workout. To access the gym a swipe card is needed from the Shire Office. Make sure to sign up and check out the space.

We have recently upgraded the facility and equipment, so we can deliver the best gym in the region!

***Access is restricted to 16 years of age and above.***

### Opening Hours

5am - 10pm

For any enquiries, please contact us directly at **9980 0600** or email us at **[cso@meekashire.wa.gov.au](mailto:cso@meekashire.wa.gov.au)**

### Fees & Charges (as of July 2024)

\$20 once-off sign up fee + then only \$32 per month

Concessions available

Fees apply for lost cards

## SWIMMING POOL

The Meekatharra War Memorial Swimming Pool is located centrally in town on Main Street. A much loved community asset, it's the perfect place to cool off during summer, socialise with friends or enhance your fitness.

### Opening Hours

1 October to 31 March each year

#### **Monday - Friday**

12pm to 6pm

6pm to 7pm - Adults Only

#### **Saturday - Sunday**

11am to 6pm

### Fees & Charges

Daily, weekly & full season passes available for children, adults and families. Concessions available.

'Pool for School' policy in place, rewarding school attendance with free entry to the Pool.

Enquire at the Shire Office for details or on **9980 0600** or email us at **[cso@meekashire.wa.gov.au](mailto:cso@meekashire.wa.gov.au)**.







## SQUASH COURT

The Meekatharra Squash Court is located behind the Club Rooms at the Sporting Complex off Landor Rd. The key and light tokens are available from the Shire Office.

This is an unmanned facility and can be accessed between the noted opening hours below.

### Opening Hours

**Temporarily out of action, repairs in progress.**

### Fees & Charges (as of July 2023)

- Court Hire - \$10 (per hour/token)
- Key Bond - \$50 (cash only)

*We do not hire equipment (racquets, balls etc.)*

*For any enquiries, please contact us directly at **9980 0600** or email us at **[cso@meekashire.wa.gov.au](mailto:cso@meekashire.wa.gov.au)***

## TENNIS COURT

The Tennis Court is located at the Sporting Complex off Landor Road and is a free facility to use for the community.

This is an unmanned facility and can be accessed between the noted opening hours below.

### Opening Hours

5am - 10pm

### Fees & Charges

- Court Hire - No charge
- Lights - \$10 per hour
- Key Bond (lights) - \$50 (cash only)

*We do not hire equipment (racquets, balls etc.)*

*For any enquiries, please contact us directly at **9980 0600** or email us at **[cso@meekashire.wa.gov.au](mailto:cso@meekashire.wa.gov.au)***





## BASKETBALL COURTS

The Basketball Court is located at the Sporting Complex off Landor Road and is a free facility to use for the community. There are regular events held by the Youth Services Team at the Basketball Courts.

This is an unmanned facility and is able to be accessed between the noted opening hours below.

### Opening Hours

5am - 10pm

### Fees

- Court Hire - No charge
- Lights - \$10 per hour
- Key Bond (lights) - \$50 (cash only)

*For any enquiries, please contact us directly at **9980 0600** or email us at **[cso@meekashire.wa.gov.au](mailto:cso@meekashire.wa.gov.au)***

## KIDS ZONE & YOUTH CENTRE

The Kids Zone and Youth Centre are open during the School Term and the School Holidays. They provide after school programs for the youth in Meekatharra, and give them a space to connect with others.

Both areas have adults who can supervise and guide the youth in what they want to do. The facilities and resources are well equipped for the youth to use.

Kidzone welcomes children from age 5-9 years, while the Youth Centre welcomes youth from age 10 - 18 years. All youth are welcome to come and even bring their friends or siblings with them.

### Opening Hours

Kidzone & Youth Centre:  
3pm - 5pm, everyday Monday to Friday

Youth Centre:  
6pm - 8pm everyday Monday to Friday

*For any enquiries, please contact us directly at **9980 0600** or email us at **[youth@meekashire.wa.gov.au](mailto:youth@meekashire.wa.gov.au)***



Senior Youth Officer: Kadisen King





# LIBRARY & MUSEUM

The Meekatharra Public Library is located at the Shire Office and is combined with a small museum. The library is a great resource and is available to all members of the community. The library contains a comprehensive collection of fiction, and non-fiction books, large print books, audiobooks, and DVDs for adults and children. There is a regular exchange of books to ensure up to date and varied stock.

A selection of new books is displayed on our feature tables until the next supply of stock arrives.

A large variety of resources are available upon request and include titles in audio formats, larger print, books written in languages other than English, and an extensive DVD collection.

You can also apply for the following:

- **Membership** - There is no cost for library membership for all residents of Meekatharra.
- **Visitor Membership** - Visitors can become a member of the Meekatharra Library. The requirements are the same as for residents.
- **Borrower Rights** - Please bring your library card when borrowing or renewing items. Items can be borrowed for three weeks.

**Open from 9:00am to 4:00pm Monday to Friday.**

Meekatharra Public Library is located at 54 Main Street Meekatharra

Ph: (08) 9980 0600

[cs@meekashire.wa.gov.au](mailto:cs@meekashire.wa.gov.au)





# Life



# style

THINGS WE DO HERE IN TOWN.

# SERVICE PROVIDER | Mission Australia



Mission Australia helps people move towards independence by standing together with Australians in need until they can stand for themselves

Mission Australia provides a range of community services in the Midwest and Gascoyne regions of Western Australia.

#### Family and Domestic Violence Service

Monday to Friday 8:00am – 4:00pm Call “000” or Local Police on 08 9918 7120 24-hour service through Police.

#### Public Tenancy Support Service

Monday to Friday 8:00am – 4:00pm

#### Remote Education and Learning – Ijaba

Monday to Friday 8:00am – 4:00pm

#### Grandparents Raising Grandchildren

Monday to Friday 8:00am – 4:00pm

#### Mental Health Support Service

Monday to Friday 8:00am – 4:00pm

#### Meekatharra Housing Support Service –

##### Gumbarra Urda

Monday – Friday 8:00am – 4:00pm

#### Emergency Relief

Monday 9:00am – 11:00am

Phone for an appointment on the day, walk-ins accepted

#### Mission Australia Meekatharra

61 Main Street/PO Box 59

Meekatharra WA 6642

08 9956 5100

## Midwest and Gascoyne Services Meekatharra



### Family and Domestic Violence Service

This service offers a community response to women and their children (if present) who are experiencing domestic violence or are concerned about their safety.

#### Support includes:

- Crisis accommodation up to 72—hours or with a Police Order
- Arranging transportation and alternative accommodation
- Essential emergency items such as food
- Links to counselling and other culturally appropriate services

### Meekatharra Housing and-Support Service—Gumbarra Urda

Transitional Accommodation will provide a pathway for families, women and children who have a desire to transition out of unsafe and/or unstable housing situations with support. MHSS will provide medium term accommodation combined with case management and community development.

### Remote Education and Learning—Ijaba

This service works with families and community to increase school attendance in Meekatharra.

Our team acknowledges that school attendance is a ‘whole of community’ responsibility and has adopted a family focused model to work specifically with parents, carers and other family members as well as Elders, the school, local residents, community organisations and government agencies.

Our aim is to identify and address the short and long term challenges that families encounter, which may impact on children and young people attending and staying at school.

### Public Tenancy Support Service

This service supports people living in Public Housing who face difficulty maintaining their tenancy.

Our team aims to support tenants to increase their ability to avoid reaching the point of eviction, debts and property standards.

### Mental Health Support Service

This service provides information support, advocacy, referral and counselling to Aboriginal people living in Meekatharra, Cue and Mount Magnet who experience and live with mental ill health.

Our team adopts a recovery-orientated model, placing significant emphasis on the choices and decisions of the individual. We aim to support people to make positive changes and reach their goals while continuing to participate fully in the community.

### Grandparents Raising Grandchildren

This service supports grandparents living in Meekatharra, Cue and Mount Magnet who are the sole or primary carer of their grandchildren.

### Emergency Relief

This service is offered to people experiencing significant financial distress, homelessness and other life challenges.

Immediate relief is available once every three months in the form of food hampers. In addition to referrals to other services. Appointments to Emergency Relief are essential.



## Community Connectors Bus

**Phone Number**  
0467 953 411

### Hours

8am to 1pm

6pm to 9pm

Monday to Friday

(No bus service on weekends or Public Holidays)

\*Some exceptions if by prior arrangement\*



*Core Services*

**We are now able to assist NDIS participants with their Core Service needs.**

**FOOD** FOR THE MOB

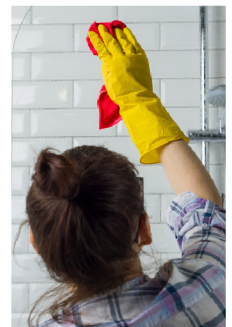
**TRANSPORT**

SERVICES FOR APPOINTMENTS

**YARD & GARDENING SERVICES**

**SOCIAL PARTICIPATION CLASSES**

**HOUSE CLEANING**



For more information please contact our Community Hub Coordinator  
Email: [communitycoordinator@yulella.org.au](mailto:communitycoordinator@yulella.org.au)  
Phone: 0499 462 829



### Animal Management

We can treat your animals for parasites and give you some tips on keeping a healthy parasite free animal

1



2



### Pest Control treatments

We can deploy cockroach and mice traps throughout your house and give you some tips on how to keep them away

3



### Community Housing

We can complete a Healthy Home Check on your house & fix minor plumbing issues along with much more!

4



### Distribution

We can provide you with soaps, linen, emergency relief meals if eligible, and much more!

5



### Education

We do education sessions on disease prevention and provide tips and tricks on how to keep your home disease free

**Call Melissa on 9980 1339**



Containers For Change

MEEKATHARRA

**NEW OPEN HOURS**

Wednesday & Saturday

**8.00—12.00**

**BAG DROP OFF AVAILABLE**





## Can you spot A rip at the beach? A great wave? A skin cancer?

Two in three Australians will develop skin cancer before the age of 70. The good news is that 95 per cent of skin cancers can be successfully treated if detected early.

**Do you know what skin cancer looks like?**  
A simple check could save your life. We should all check our skin regularly. Get to know your skin and take immediate action if you notice any changes.

If you have fair skin, blue or green eyes, fair or red hair or lots of moles or freckles you are at high risk of developing skin cancer.

Cumulative UV exposure also contributes to your risk of developing skin cancer. So if you grew up in Australia, work outdoors or spend lots of time in the sun you should take care to protect and check your skin.

Use the ABCD of melanoma detection to check for the following:



**Asymmetry**  
If the spot or lesion is divided in half, the two halves are not a mirror image.



**Border**  
A spot with a spreading or irregular edge.



**Colour**  
A spot with a number of different colours through it.



**Diameter**  
A spot that is growing and changing in diameter or size.

### Melanoma

- Accounts for 1-2% of skin cancers.
- Is the most dangerous and aggressive form of skin cancer.
- If left untreated can spread to other parts of the body and can be fatal.
- Grows quickly over weeks to months.
- Can appear as a new or existing spot, freckle or mole that changes in colour, size or shape.
- Can grow anywhere on the body, not just areas exposed to the sun.
- Occurs most frequently on the upper back in males and on the lower leg in females.



### Skin cancers

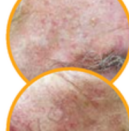
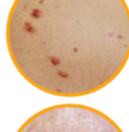
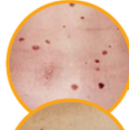
There are three main types of skin cancer: basal cell carcinoma, squamous cell carcinoma and melanoma.

#### Basal Cell Carcinoma (BCC)

- Accounts for about 66% of skin cancers.
- Grows slowly over months or years.
- Look for small, round or flattened spots that are red, pale or pearly in colour. Some are scaly like a patch of eczema.
- May become ulcerated, bleed and fail to heal.
- Usually found on the upper body, head or neck.

#### Squamous Cell Carcinoma (SCC)

- Accounts for about 33% of skin cancers.
- Grows over months and may spread if not treated.
- Look for scaly red areas that may bleed easily, ulcers or non-healing sores that are often painful, especially when touched.
- Often found on lips, ears, scalp, backs of the hands and lower legs.



### Warning signs

The following spots are not skin cancer but may predispose you to skin cancer or be a warning sign that skin damage has occurred.

#### Dysplastic naevi ('atypical moles')

- Are odd-shaped moles that may indicate a greater risk of developing melanoma.
- Usually 5-10mm wide with uneven colouring.
- If you have lots of odd-shaped moles get your skin checked regularly by your doctor.

#### Solar keratoses ('sunspots')

- Generally hard, red, scaly spots on sun-exposed areas of the skin.
- Most commonly found on the head, neck and on the back of the hands.
- Is a warning sign that the skin has been damaged by the sun and that skin cancers may develop.
- If you have solar keratoses, protect yourself from further sun damage and have your skin checked regularly by a doctor.

### Harmless spots

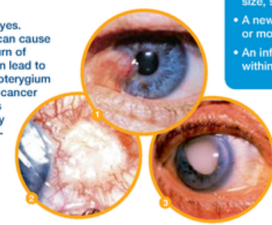
#### Seborrheic keratoses ('senile warts')

- Common non-cancerous spots sometimes confused with melanomas.
- Raised warty-looking brown or black lesions with well-defined borders.
- Mostly found on the trunk but can occur anywhere on the body.

#### Eye damage

The sun can also damage your eyes. In the short term, sun exposure can cause burns to the eye similar to sunburn of the skin. Long-term exposure can lead to cataracts (clouding of the lens), pterygium (tissue covering the cornea) and cancer of the conjunctiva or cornea. It is important to protect your eyes by wearing sunglasses and a broad-brimmed or bucket hat.

1. Pterygium (flesh-ridg-i-um)
2. Squamous Cell Carcinoma of the conjunctiva
3. Cataract



### Check your skin regularly

- Most skin cancers are detected by people themselves or by a family member.
- To check your skin, undress completely and stand in good light.

- Use a full-length or hand-held mirror to check your back, legs and scalp. If there are areas you can't see properly ask a family member or your GP for a skin check - don't ignore them.

- Make sure you check your entire body as skin cancers can sometimes occur on parts of the body not exposed to the sun, for example the soles of the feet. Go through the same checking sequence each time to get into a routine.

### Check your:

- Head, scalp, neck and ears  
Take an extra close look around the nose, lips, ears and scalp.
- Torso  
Check the front, back and sides of the torso.
- Arms, hands, fingers and nails  
Remember to look at the spaces between the fingers and the beds of your fingernails.
- Buttocks, legs and feet  
Remember to check between toes, under toenails and on the soles of feet.

### See a doctor straight away if you notice:

- A skin spot that is different from other spots around it.
- A mole or freckle that has changed in size, shape or colour.
- A new spot that has changed over weeks or months in size, shape or colour.
- An inflamed sore that has not healed within three weeks.

### Be SunSmart.

Protect yourself in five ways from skin cancer. UV levels are highest during the middle of the day. Take care to be SunSmart when the UV Index is 3 or above. You can find the UV Index at [www.myUV.com.au](http://www.myUV.com.au)



**Slip on protective clothing**  
• Use clothing to cover as much skin as possible.



**Slap on SPF 30 or higher sunscreen**  
• Make sure it's broad spectrum and water-resistant.



**Slap on a hat**  
• Wear a hat that covers your face, head, neck and ears.



**Seek shade**  
• Make use of trees or built shade or bring your own.



**Slide on some sunglasses**  
• Close-fitting wrap-around styles offer the best protection.

**Melanoma accounts for 10% of all cancers**



For more information call the Cancer Council Helpline on 13 11 20 or visit [www.cancerwa.asn.au](http://www.cancerwa.asn.au) Developed with assistance from Dr Jamie Von Nida, Dr Peter Randell and Dr Judy Cole.

Being SunSmart is a simple and effective way of reducing your risk of developing skin cancer. Protect yourself in five ways:

- Slip on sun protective clothing
- Slap on SPF50 or SPF50+ sunscreen
- Slap on a broad brimmed hat
- Seek shade
- Slide on sunglasses.



Department of Energy, Mines,  
Industry Regulation and Safety



## REGIONAL COLUMN

[www.demirs.wa.gov.au](http://www.demirs.wa.gov.au) [www.wa.gov.au](http://www.wa.gov.au)

**With Senior Regional Officer for Midwest – Natasha Pirrottina**

### **How to dob in a ticket scalper to Consumer Protection**

How many times have you gone online for event ticket sales queues only to find they are all sold out? Disappointment soon turns into despair as you start to see tickets for re-sale in online marketplaces at hugely inflated prices. How is that fair?

Not only is it not fair, it's illegal.

Turn that despair into something useful and dob these ticket scalpers into us at Consumer Protection.

Re-selling tickets is a way for people to get their money back on tickets they can no longer use, and it gives fans an opportunity to buy tickets to otherwise sold-out events. However, there are laws re-sellers need to follow to make it fair for everyone.

What's the best way to report a scalper to us? Screen shots of people re-selling tickets at ridiculous prices is always a good start but send us everything you have so we can hit them where it hurts with a \$2,000 infringement.

Under the *Ticket Scalping Act 2021*, which came into effect in September 2021, ticket re-sellers are limited to a maximum ten per cent mark-up from the original price, including booking fees. They must also specify the location of the seat or viewing spot for each ticket when they on-sell the ticket. Send us any weblinks, ad identification or reference numbers and screenshots of the advert in question.

We also want to see the re-sellers name or alias and any contact details you have for them. If you've had an email or messaging conversation with them, include those screen shots too.

And finally, it also helps if you include your contact details in case our Investigators need to ask further questions. Helping us to fight for the rights of concert and event goers in Western Australia is important. We need you to be our eyes and ears so that we can keep things fair for everyone who wants to attend these events.

Not only can we issue fines of \$2,000, but if the conduct of the ticket scalper is deemed serious enough, the Court can impose penalties of up to \$20,000. Since the laws came in three years ago, the Consumer Protection team have issued \$74,000 worth of fines.





Department of Energy, Mines,  
Industry Regulation and Safety



We will wipe out any profit the scalpers make.

Often large events will provide a way to re-sell tickets through authorised platforms who will make sure ticket re-sales are compliant, so we recommend using those to buy and sell to avoid the risk of having your ticket cancelled for breaching WA laws or overpaying.

To dob in a ticket scalper, go to [consumerprotection.wa.gov.au](http://consumerprotection.wa.gov.au) or send us an email with your evidence and the subject heading 'Ticket Scalping' to [consumer@demirs.wa.gov.au](mailto:consumer@demirs.wa.gov.au).

M E E K A T H A R R A



ACCOMMODATION CENTRE

Open Daily 6.00am—9.00pm

Catering for your special function? Email us for a quote on

[bookings@meekatharraaccomodation.com.au](mailto:bookings@meekatharraaccomodation.com.au)

or call on 99811253



Meekatharra

# Commercial Hotel

Photo from: wanderingwarwickswonderment.wordpress.com

## Facilities:

- Hotel/ Motel
- Pub
- Bottle'o
- Outdoor Beer Garden
- Air conditioned Dining Room

## Located at:

77 Main Street,  
Meekatharra, 6642

*We serve excellent  
counter meals daily*

## Lunch

12 noon - 1:30 pm  
(Mon-Sat)

## Dinner

6-8 pm  
(Sun-Sat)



Motel Rooms



Motel Rooms

## For bookings and enquiries:

### Telephone

99811020

### Email

commieh@westnet.com.au

### Website

www.commercialmeeka.com.au

## Accommodation includes

- 18 Modern Motel units with en suite, Tv, & Air con-
- Located at the rear of Hotel with enclosed parking-
- Traditional Hotel rooms with TV & air con-
- Located upstairs in original building-



Beer Garden



Pub





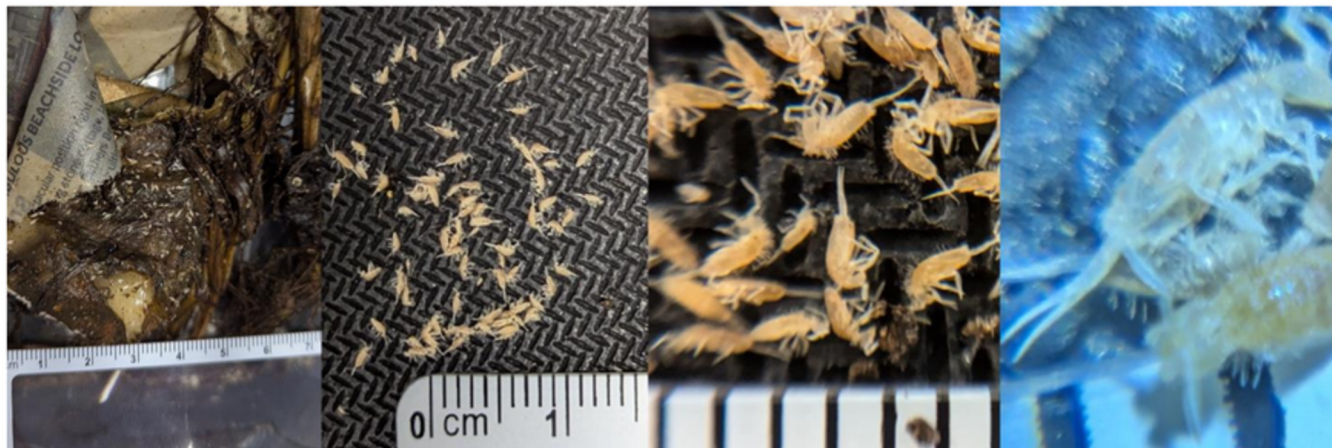


Department of  
Primary Industries and  
Regional Development

## Backyard Buddies

Your monthly guide to pests, weeds and diseases

### Compost buddies: a boost with springtails



Left to right: Springtails from a compost bin in Booragoon. Each photo shows springtails at higher magnification.

Springtails are usually 1 to 3 mm and inhabit dark, moist environments so you might not have noticed them before. You're more likely to see them after heavy rains, but why not check your compost?

#### Ecological decomposers

Springtails are wondrous little creatures which can help speed up decomposition processes in our compost bins. There are many species across the world providing this great service. Springtails eat fungi, decaying plant and animal material and other waste products. This breaks those materials into smaller pieces that soil microbes like some bacteria and nematodes can convert into nutritious forms that plants can use, i.e. fertiliser! Because of this beneficial activity, they can also be used in terrariums and pet animal enclosures to consume undesirable mould and animal wastes.

Springtails are also a source of food themselves for beetles, flies and other insects. You may even spot geckos, hanging around the rim of your compost bin looking for a feed.

#### Springing superpower

Like insects, springtails have three pairs of legs, a

head, thorax and abdomen, but no wings. Despite their similarities they are not insects and belong to a different taxonomic group called Collembola. As their name suggests, most springtails... spring! Those that do, have a little tail-like appendage called a furca on the underside of their abdomen. It's normally held in place under high tension. If danger is detected, the furca can spring open to catapult the springtail up, up and away! It's been suggested this would be comparable to a human jumping higher than a six-storey building. Amazing!

#### Compost buddy

Seeing springtails in compost is an indicator of a healthy compost ecosystem. If you notice that springtail numbers are decreasing, check there's adequate moisture and that your bin lid fits well. They cannot survive in dry environments for extended periods. Springtails will find their own way into compost from surrounding areas.

#### Noticed new and damaging pests?

Unfamiliar and damaging pests and plant diseases can be reported to our department for biosecurity screening. Send in photos with your location and details on what's happening, and we'll take a look.



#### Report your observations

MyPestGuide® Reporter via app or online [mypestguide.agric.wa.gov.au](https://mypestguide.agric.wa.gov.au)

Pest and Disease Information Service (08) 9368 3080 | [padis@dpird.wa.gov.au](mailto:padis@dpird.wa.gov.au)

JANUARY

2025

MON	TUE	WED	THU	FRI	SAT	SUN
30	31	1	2	3	4	5
Shire Office Christmas Closure 	Shire Office Christmas Closure 	Shire Office Christmas Closure 	Shire Office Christmas Closure 	Shire Office Christmas Closure 		
6	7	8 Containers for Change  8am - 12pm Yulella Aboriginal Corporation	9	10	11 Containers for Change  8am - 12pm Yulella Aboriginal Corporation	12
13	14	15 Containers for Change  8am - 12pm Yulella Aboriginal Corporation	16	17	18 Containers for Change  8am - 12pm Yulella Aboriginal Corporation  Council Meeting 11:30am	19
20	21	22 Containers for Change  8am - 12pm Yulella Aboriginal Corporation	23	24	25 Containers for Change  8am - 12pm Yulella Aboriginal Corporation	26 Meeka Community Awards  10am - 12pm Shire Hall Free Pool entry 12pm - 3pm 
27	28	29 Containers for Change  8am - 12pm Yulella Aboriginal Corporation	30	31		



FEBRUARY

2025

MON	TUE	WED	THU	FRI	SAT	SUN
					1 Containers for Change  8am - 12pm Yulella Aboriginal Corporation	2
3	4	5 Containers for Change  8am - 12pm Yulella Aboriginal Corporation	6	7	8 Containers for Change  8am - 12pm Yulella Aboriginal Corporation	9
10	11	12 Containers for Change  8am - 12pm Yulella Aboriginal Corporation	13	14	15 Containers for Change  8am - 12pm Yulella Aboriginal Corporation  Council Meeting 11:30am	16
17	18	19 Containers for Change  8am - 12pm Yulella Aboriginal Corporation	20	21	22 Containers for Change  8am - 12pm Yulella Aboriginal Corporation	23
24	25	26 Containers for Change  8am - 12pm Yulella Aboriginal Corporation	27	28		

## HEALTHY FRUITS OF THE FOREST YOGHURT COMPOTE

### RECIPE



Prep: 5 min  
Cook: 5 min  
Servings: 2  
☆☆☆☆☆  
[Print](#)

Summer-1 Breakfast Snack Dessert Gluten-free Quick Mothers Day Egg-free  
Melbourne Cup 5-Ingredients Serves 2

☐ Cook Mode Prevent your screen from going dark

### Method

1. Place mixed berries or blueberries into a small saucepan and cook over medium heat, gently stirring until berries soften, approximately 3 to 4 minutes.
2. Remove from heat and stir through strawberries. Allow to cool for at least 5 minutes, longer if time permits.
3. Divide half the berry mixture between two glasses.
4. Top with layers of yoghurt, remaining berries then yoghurt.
5. Sprinkle almonds on top and serve.

**Variation:** Heat berries for 2 minutes once strawberries have been added and serve on 4 slices of raisin toast or fruit bread.

**Serving Suggestion:** This can also be served as a dessert, presented in a decorative long-stemmed glass.

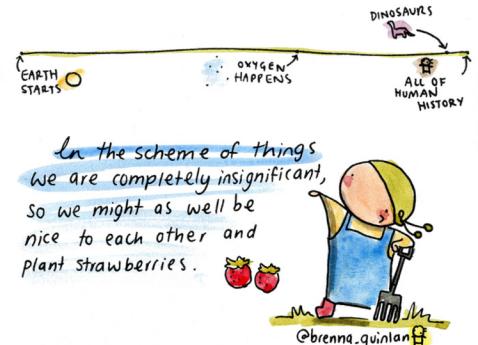
### Ingredients

- ▲ 1 cup frozen mixed berries or blueberries
- ▲ 1 250 g punnet strawberries, hulled and sliced
- ▲ 1 1/2 cups vanilla or berry low-fat yoghurt
- ▲ 3 tbs flaked almonds, roughly chopped

### Healthy tip!

Simple switch idea: try reduced-fat milk, cheese and yoghurt.

### EARTH HISTORY TIMELINE



<https://livelighter.com.au/recipe/245/fruits-of-the-forest-yoghurt-compote>



**VOL\_NTEER  
WE NEED U**  
[wa.gov.au/volunteering](https://wa.gov.au/volunteering)



### ANNOUNCEMENTS!

From 1 July 2023

Department of Transport Servicing

Tuesday 9am to 1pm

Thursday 9am to 1pm

And when the Testing officer is visiting.

Please note, that for people from Stations, Wiluna or Burungurra.

We will be able to help you when you come in.

-Jo from CRC





## Aboriginal Justice Open Day

Meekatharra Shire Hall

75 Main Street, Meekatharra

When: Tuesday 25 March 2025 from 9am – 4pm



Aboriginal Justice Open Days are a 'one-stop shop' where you can access services that can help you with identification, fines and driver's licence enquiries

### Who can help you on the day



#### Department of Transport

Apply for a driver's licence, WA Photo (ID) card, driving assessments, licence status queries and other information about licencing services

Theory Test: **\$21.20**

Learner's Permit: **\$143.30**

Log Book: **\$10.70**

WA Photo (ID) Card: **\$47.50**



#### Registry of Births, Deaths and Marriages

Register your children's births: **Free**

Apply for Birth, Death and Marriage Certificates: **\$55.00**

Change of Name: **\$190.00**



#### Fines Enforcement Registry

For queries on fines and make arrangements for time-to-pay



#### Services Australia – Centrelink

Identification requirements for licensing only

#### Community Services

Yulella Aboriginal Corporation

**Please arrive early to ensure that you do not miss out accessing services**

**Ensure that all children are accompanied by a parent or guardian and supervised at all times**

**THE ABORIGINAL JUSTICE OPEN DAYS ARE OPEN TO EVERYONE**

So that you may be assisted in the best possible way, please bring as much of the following on the day:

- Birth Certificate
- Medicare card
- Centrelink card
- Bank card

Bank statement or official letter/bill from a government agency or employer that has your address and is no older than 6 months

- Either cash or credit card/debit card for payment





Department of  
Transport



## Department of Transport Remote Services

**Visiting:** Shire of Meekatharra

**When:** Thursday 27 February 2025, 1.00pm-3.30pm

**Where:** Yulella Office , Meekatharra

### We will be able to help you with the following services:

- theory test
- photo card applications
- driver's licence applications
- change of address
- registration and driver's licence renewals
- vehicle transfers
- return of vehicle plates
- driving assessments

**To enable us to help you, please ensure you bring your birth certificate, Medicare card, bank card and two types of proof of residency, along with cash or card for payment.**

**For enquiries please call:** Georgina- 0459 872 275 Jodi- 0467 767 004

### Swap queue time, for you time



Online services  
available 24/7

Sign up to DoTDirect online services for around the clock services, payments, and applications, to manage your personal details, and more.

[www.transport.wa.gov.au/dotdirect](http://www.transport.wa.gov.au/dotdirect)

**DoTDirect**





Department of  
Transport



## Department of Transport Remote Services

**Visiting:** Shire of Meekatharra

**When:** Friday 28 February 2025, 8.00am-10.00am

**Where:** Yulella Office, Meekatharra

### We will be able to help you with the following services:

- theory test
- photo card applications
- driver's licence applications
- change of address
- registration and driver's licence renewals
- vehicle transfers
- return of vehicle plates
- driving assessments

To enable us to help you, please ensure you bring your birth certificate, Medicare card, bank card and two types of proof of residency, along with cash or card for payment.

**For enquiries please call:** Georgina- 0459 872 275 Jodi- 0467 767 004

### Swap queue time, for you time



Online services  
available 24/7

Sign up to DoTDirect online services for around the clock services, payments, and applications, to manage your personal details, and more.

[www.transport.wa.gov.au/dotdirect](http://www.transport.wa.gov.au/dotdirect)

**DoTDirect**

**Classified Ads**

**& Miscellaneous**

OTHER HELPFUL INFORMATION ABOUT MEEKA



# Merome **BEARD** MLA

**YOUR LOCAL MEMBER OF PARLIAMENT**

## Supporting **Meekatharra** & our Regional Communities

### Get in contact

-  08 9941 2999
-  [northwest@mp.wa.gov.au](mailto:northwest@mp.wa.gov.au)
-  @MemBeardMLA
-  20 Robinson Street,  
Carnarvon WA 6701



*Taking Common Sense to Perth*

Authorised by S. Morgan, Liberal Party, 2/12 Parliament Place, West Perth WA 6005.



## Territories Stolen Generations Redress Scheme

Seeks to recognise the harm and trauma caused to Stolen Generations survivors who were removed from family or community in the NT, ACT or the Jervis Bay Territory.

Find out more at [territoriesredress.gov.au](https://territoriesredress.gov.au) or call [1800 566 111](tel:1800566111)



[territoriesredress.gov.au](https://territoriesredress.gov.au)



Australian Government  
National Indigenous Australians Agency

The Territories Stolen Generations Redress Scheme provides support to Stolen Generations survivors who were removed from their families or communities, and whose removal took place in the:

- Northern Territory, before 1 July 1978 or;
- Australian Capital Territory, before 11 May 1989 or;
- Jervis Bay Territory.

The Scheme is a financial and wellbeing package that:

- Makes payments in recognition of the harm caused by removal from family or community.
- Assists with the healing of this trauma for the Stolen Generations survivors who were removed in the territories.
- Help survivors gain access to free support services.
- Gives survivors the choice to tell their story.

**This subject may be very hard to read or talk about.**

**It may bring up difficult feelings and memories.**

<https://territoriesredress.gov.au/support-services>

## ADVERTISING IN THE MEEKATHARRA DUST



The Meekatharra Dust is a newsletter produced by the Shire of Meekatharra each month that highlights local events and helps to distribute news locally. The newsletter reaches hundreds of people each month through copies sold around town, copies sent in the mail, and those viewed online.

**Local non-for-profit organisations are eligible to receive free advertising.**

If you wish to advertise in the Meekatharra Dust please get in contact with us on [cdo@meekashire.wa.gov.au](mailto:cdo@meekashire.wa.gov.au).

SIZE	COLOUR	B & W
Full Page	\$77.00	\$49.50
Half Page	\$44.00	\$27.50
Quarter Page	\$27.50	\$16.50
Eighth Page	\$16.50	\$11.00

Prices (from 1st of July 2024)



# Peter Foster MLC

MEMBER FOR MINING AND PASTORAL REGION



**YOUR VOICE IN THE  
COOK GOVERNMENT**

[peterfostermc.com.au](http://peterfostermc.com.au)

Shop 49, 5 Sharpe Street Karratha WA 6714

(08) 9144 4187

 [peter.foster@mp.wa.gov.au](mailto:peter.foster@mp.wa.gov.au)

 PeterFosterMLC

 @peterfostermc

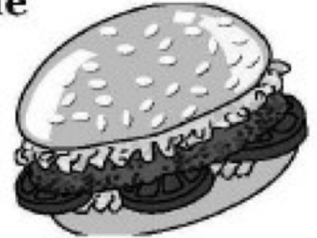
Authorised by P. Foster, 49/5 Sharpe Avenue, Karratha, WA 6714



# Meekatharra Corner Store

Corner of Main & High Streets, Meekatharra

**Ph: 9981 1151**



**BP Fuel & Lubricants**

**Premium Unleaded Fuel now available**

**Auto Accessories**

**Kleenheat Gas**

**Key Cutting**

**Take-Away Food**

**Asian Food**

**A range of Asian Ingredients and utensils available for sale**

**Burgers**

**Rolls**

**Sandwiches made to order**

**Bottled water deliveries**

**Tyre Repairs**

**Driveway Service**



## Extraordinary Outback Experience



Self contained units

Twin rooms

Camp sites

Camp kitchen

Fuel

Licensed store

Lawns & shade

**Mt Augustus**

**Tourist Park**

Heart of the Gascoyne  
at the World's  
Biggest Rock



0899439527

[mtaugustustouristpark@skymesh.com.au](mailto:mtaugustustouristpark@skymesh.com.au)

DO YOU HAVE A  
STORY TO TELL?  
OR A PHOTO?  
OR PERHAPS AN ARTWORK  
ABOUT MEEKATHARRA?



**CALLING FOR**

**Submissions!**

The Shire of Meekatharra will pay **\$100** for articles that  
are related to Meekatharra.

Send your submissions to PO Box 129, Meekatharra WA  
6642 or drop them in at the Shire office. Alternatively,  
you can email us at: [cdo@meekashire.wa.gov.au](mailto:cdo@meekashire.wa.gov.au)



# ACTIVITIES

## WORD SEARCH

### Australia

A	N	M	E	L	B	O	U	R	N	E	R	N	A
R	C	M	N	E	N	T	A	B	M	O	W	D	A
S	O	K	C	O	R	S	R	E	Y	A	N	I	B
S	M	B	R	I	S	B	A	N	E	I	O	N	A
G	M	U	H	A	A	R	T	U	M	Q	U	G	R
A	O	R	E	T	U	Y	E	N	D	Y	S	O	R
A	N	U	O	O	R	A	G	N	A	K	K	A	I
D	W	L	R	K	N	E	A	A	U	A	A	L	E
E	E	U	E	R	T	I	P	A	T	R	U	A	R
L	A	A	R	R	U	B	A	K	O	O	K	O	R
A	L	G	A	U	R	B	E	S	H	I	E	K	E
I	T	L	O	A	U	S	T	R	A	L	I	A	E
D	H	R	B	A	W	Q	U	A	N	T	A	S	F
E	A	A	I	N	A	M	S	A	T	F	S	E	I

WOMBAT  
KANGAROO  
TASMANIA  
COMMONWEALTH  
PERTH  
QUANTAS  
MELBOURNE  
ADELAIDE  
KOOKABURRA  
AYERS ROCK  
BARRIER REEF  
AUSTRALIA  
ULURU  
DINGO  
KOALA  
BRISBANE  
SYDNEY

Play this puzzle online at : <https://thewordsearch.com/puzzle/1996/>

## SUDOKU

							8	
		6						
	1				6			
	9	7					5	
3		2		7		8		
4				8				2
		3			2		7	
			9	6		3		
				5	7	6		1

#35130

Difficulty: moderate

			6					
	2			4			3	
		1					7	
	9				5			8
	7			9				2
	3						6	
6				2	8			
2		9	1			4		
						5		7

#13707

Difficulty: hard

## SOLUTIONS

A	N	M	E	L	B	O	U	R	N	E	R	N	A
R	C	M	N	E	N	T	A	B	M	O	W	D	A
S	O	K	C	O	R	S	R	E	Y	A	N	I	B
S	M	B	R	I	S	B	A	N	E	I	O	N	A
G	M	U	H	A	A	R	T	U	M	Q	U	G	R
A	O	R	E	T	U	Y	E	N	D	Y	S	O	R
A	N	U	O	O	R	A	G	N	A	K	K	A	I
D	W	L	R	K	N	E	A	A	U	A	A	L	E
E	E	U	E	R	T	I	P	A	T	R	U	A	R
L	A	A	R	R	U	B	A	K	O	O	K	O	R
A	L	G	A	U	R	B	E	S	H	I	E	K	E
I	T	L	O	A	U	S	T	R	A	L	I	A	E
D	H	R	B	A	W	Q	U	A	N	T	A	S	F
E	A	A	I	N	A	M	S	A	T	F	S	E	I

Solution of sudoku #35130:

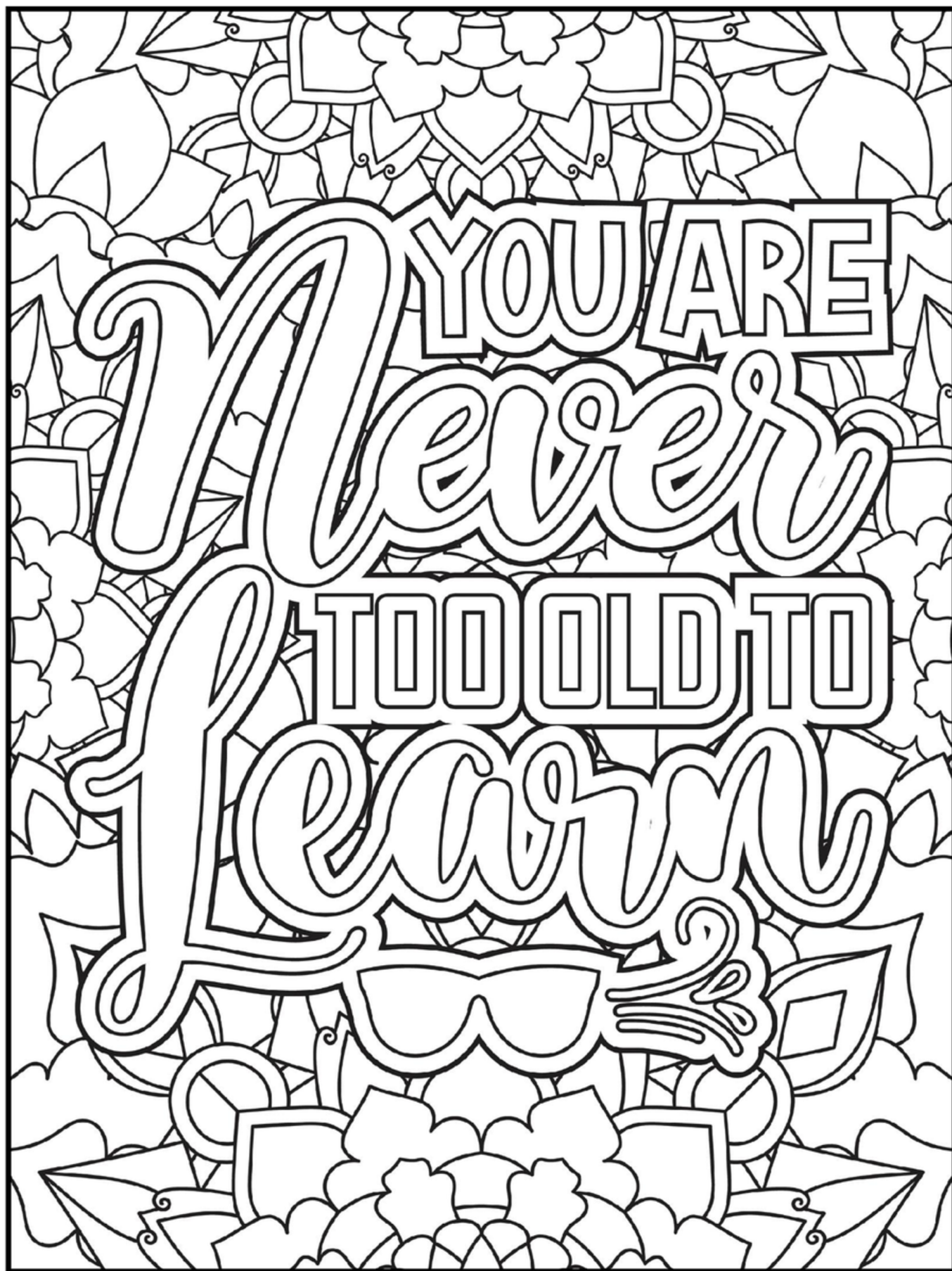
7	3	4	1	9	5	2	8	6
9	2	6	7	4	8	5	1	3
5	1	8	2	3	6	4	9	7
8	9	7	6	2	3	1	5	4
3	5	2	4	7	1	8	6	9
4	6	1	5	8	9	7	3	2
6	4	3	8	1	2	9	7	5
1	7	5	9	6	4	3	2	8
2	8	9	3	5	7	6	4	1

Solution of sudoku #13707:

3	8	4	6	1	7	2	5	9
7	2	5	8	4	9	6	3	1
9	6	1	3	5	2	8	7	4
1	9	6	2	3	5	7	4	8
5	7	8	4	9	6	3	1	2
4	3	2	7	8	1	9	6	5
6	4	7	5	2	8	1	9	3
2	5	9	1	7	3	4	8	6
8	1	3	9	6	4	5	2	7

# ACTIVITIES

## COLOURING SHEET





# Family and domestic violence is not always physical

If someone is controlling and  
does something bad over and over,  
it can make you feel scared,  
shame and no good

...it's called

## COERCIVE CONTROL

and it's not part  
of our culture

Look up on the internet

Q [wa.gov.au/familyviolence](https://www.wa.gov.au/familyviolence)



# 100,000 temporary jobs

Register to work  
at the federal election

Work before, on and after election day  
in metro, regional or remote areas.



All jobs  
are paid



No experience  
is needed



Paid training  
is provided

➔ Register now



**AEC**

Australian Electoral Commission



[aec.gov.au/electionjobs](https://aec.gov.au/electionjobs)

If you registered before July 2024,  
you need to re-register.

Authorised by the Electoral Commissioner, 10 Mort Street, Canberra, ACT

## Subscriptions

If you would like to subscribe to the Meekatharra Dust,  
simply complete the form and send your payment to us.

Subscription Price is \$39.65 GST inclusive.

Subscriptions are for a 12-month period, including postage.  
**Alternatively, you can get a free copy online via our  
website.** If needing assistance, please call our office on  
9980 0600.

TO: The Meekatharra Dust  
PO Box 129,  
Meekatharra WA 6642

NAME: \_\_\_\_\_

POSTAL ADDRESS: \_\_\_\_\_

\_\_\_\_\_  
\_\_\_\_\_