

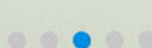


NOW  
FREE!

Vol. 386

NOV / DEC 2025  
FREE

Seasons Greetings!



#ShireofMeekatharra  
#AGoldenProspect  
#Community  
#MidWest #Mikadah

**CONGRATULATIONS  
ADRIAN DOYLE!**

*Highly commended short  
story 'The Nullagine  
Drover'*

**COMMUNITY  
HAPPENINGS**

*Community Christmas Party  
Seniors Day 2025  
Karatundi Clean-Up*

**SHIRE SERVICES**

*Keep track of Shire  
services over Christmas  
& New Year.*

Photo credit: Eleonora Zibetti



## **SCHEDULE OF MEETING DATES, TIMES AND LOCATIONS**

*JANUARY – DECEMBER 2026*

### **ORDINARY MEETINGS OF COUNCIL**

In accordance with section 5.25(1)(g) of the *Local Government Act 1995* and regulation 12 of the *Local Government (Administration) Regulations 1996* the scheduled Shire of Meekatharra Ordinary Meeting dates for 2026 calendar year are as follows:

**Saturday, 17 January 2026**

**Saturday, 21 February 2026**

**Saturday, 21 March 2026**

**Saturday, 18 April 2026**

**Saturday, 16 May 2026**

**Saturday, 20 June 2026**

**Saturday, 25 July 2026**

**Saturday, 15 August 2026**

**Saturday, 12 September 2026**

**Saturday, 17 October 2026**

**Saturday, 21 November 2026**

**Friday, 18 December 2026**

All meetings are held in Council Chambers located at the corner Main & Savage Streets Meekatharra and commence at 11.30am (except the 18 December 2026 meeting which commences at 4:30pm).

### **AUDIT COMMITTEE MEETINGS**

Audit Committee Meetings will be arranged as required in consultation with the Shire President.

**Nathan Cain**  
Chief Executive Officer

## **GENERAL DISCLAIMER**

The opinions expressed have been published in good faith on the request of the person requesting publication, and are not those of the Shire of Meekatharra. All articles, comments, advice and other material contained in this publication are by way of general comment or advice only and are not intended, nor do they purport to be the correct advice on any particular matter or subject referred to. No person should act on the basis of any matter, comment or advice contained in this publication without first considering, and if necessary taking appropriate professional advice upon the applicability to their particular circumstances. Accordingly, no responsibility is accepted or taken by the Shire of Meekatharra, or the authors and editors of the Meekatharra Dust, for any damage or loss suffered by any party acting in reliance on any matter, comment or advice contained herein.



# Contents

Nov/Dec 2025 | Vol.386

## Introduction -----

- Council Meeting Schedules
- Disclaimer

## Community Happenings -----

- Congratulations to Adrian Doyle
- 2025 Community Christmas Party
- Meekatharra Seniors Day 2025
- Community Spirit in Action | Karalundi College Making a Difference
- Lolly Run!
- Youth Services | Kids Zone & Youth Centre
- Meekatharra District High School
- Volunteer Opportunities
- Service Provider Information | Meekatharra St John
- Community Facilities | Available For Hire
- Community Facilities | Sport & Recreation
- Shire Services
- 'What's On!' & Calendar of Events

## Lifestyle -----

- Service Provider Information | Mission Australia
- Shire Services | Rubbish Collection, Christmas, New Year Operational Hours
- First Aid Tips | Snake Bites
- Community Alert | Pet Safety
- Information | Regional Column from Consumer Protection
- Recipe of the Month | Healthy Zucchini Slice
- Gardening | Backyard Buddies - Lady... bug, bird, beetle?
- Health | Know Your Standard Drinks
- Service Provider Information | Yulella Aboriginal Corporation

## Classified Ads & Misc -----

- Advertising in the Dust
- Activities | Word Search, Sudoku, Coloring Sheet

We would love to hear from you.  
Please contact the Community Development Officer to provide  
submissions on

08 9980 0600  
[shire@meekatharra.wa.gov.au](mailto:shire@meekatharra.wa.gov.au)

and follow us on our socials!





# Welcome!



## Welcome to the latest edition of The Meekatharra Dust!

As we bring you the final edition of the Meekatharra Dust for the year, it's a timely opportunity to reflect on the past 12 months and everything our community has achieved together.

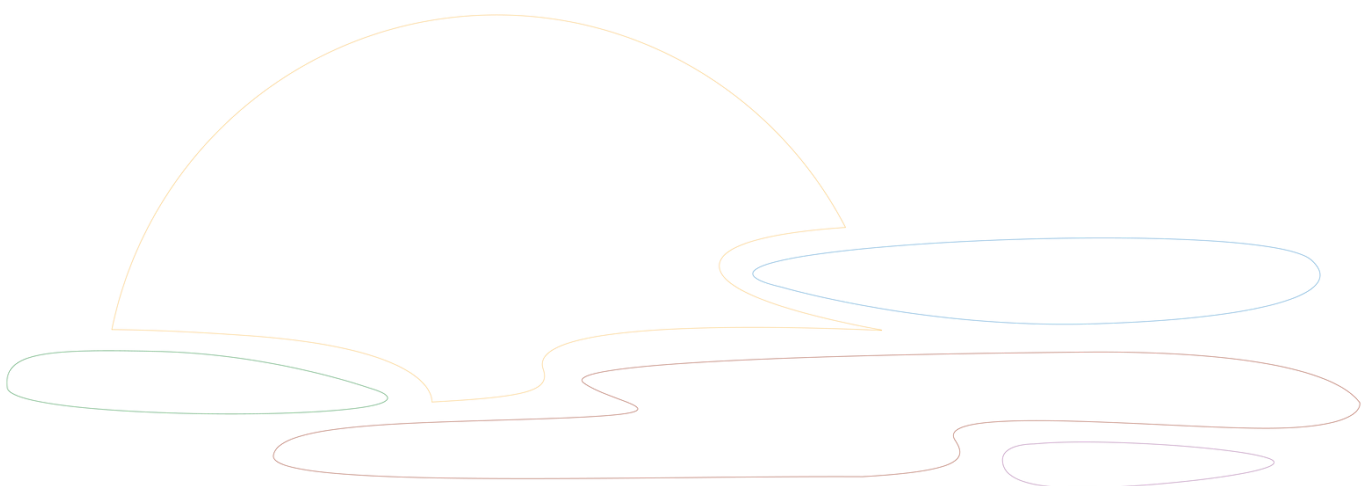
Throughout the year, the Dust has shared stories of connection, resilience and pride. From intimate community events to the Spirit of Meekatharra festival, new initiatives and consultations, to celebrating local achievements, volunteers and everyday moments that make Meekatharra special.

We've highlighted opportunities to have your say, promoted programs and services, and shared the many ways our community continues to support one another.

From the reopening of the War Memorial Pool with free pool access, to the community markets, Meeka Creatives, art exhibitions, Blue Light Disco's, Emu Bob clean-ups, NAIDOC week celebrations and local success stories, 2025 has been a year filled with activity, creativity and strong community spirit.

As the festive season approaches, we encourage everyone to look out for one another. Check in on neighbours, friends and loved ones, and take extra care during what can be a busy and sometimes challenging time of year. Small acts of kindness and connection can make a big difference.

On behalf of the Shire, thank you for your ongoing support, involvement and contributions throughout the year. We wish you a safe, happy and restful festive season and look forward to sharing more community stories with you in the year ahead.





Community Happenings |

Congratulations to Adrian Doyle

High Commendation in the 2025 Big Sky Short Story Competition

The Nullagine Drover

Congratulations to Local Writer Adrian Doyle  
The Shire of Meekatharra congratulates local resident Adrian Doyle on receiving a Highly Commended award in the 2025 Big Sky Short Story Competition.

Adrian’s short story, The Nullagine Drover, was shortlisted and recognised at the Big Sky Writers Festival held at the Geraldton Library from Friday, October 24 to Sunday, October 26, 2025. An impressive achievement in a highly competitive field of entries from across the region.

Inspired by one of the Shire’s historical plaques at the Meekatharra Stockyards, The Nullagine Drover highlights Adrian’s talent for storytelling, showcasing the power of our region’s lifestyle, character and landscapes to inspire creative work.

The story has since been published and is available to read via the City of Greater Geraldton Regional Library website as part of the 2025 Short Story Prize collection.

The Shire extends its congratulations to Adrian on this well-deserved recognition and thanks him for sharing his talent for writing and story-telling with a wider audience.



Adrian and his wife, Carolyn

Photo credit: Eleonora Zibetti



Scan the QR code to read The Nullagine Drover

Christmas

POOL HOURS 2025/26

Wednesday	24th Dec	(Christmas Eve)	OPEN
Thursday	25th Dec	(Christmas Day)	OPEN
Friday	26th Dec	(Boxing Day)	OPEN
Saturday	27th Dec		OPEN
Sunday	28th Dec		OPEN
Monday	29th Dec		OPEN
Tuesday	30th Dec		OPEN
Wednesday	31st Dec		OPEN
Tuesday	1st Jan	(New Years Day)	OPEN

Yes! We are open!!





# Community Happenings | 2025 Community Christmas Party

## A Festive Evening of Community, Connection and Christmas Cheer

The Shire of Meekatharra hosted the Community Christmas Party on Friday 5 December, welcoming families, children, and community members to the Shire Town Hall for an afternoon and evening of celebration, connection, and Christmas cheer, with the support of local partner organisations.

From the moment the doors opened, the Town Hall came alive with laughter, music, and excitement especially as children eagerly awaited Santa's visit. Around 200 community members attended the free community event, which brought people together in a safe, inclusive and family-friendly environment.

Children aged 0 to 17 years enjoyed receiving gifts from Santa and taking photos, while families and community members shared a festive community dinner and enjoyed spending time together with music playing in the background.

Following dinner, the celebrations continued at the Meekatharra War Memorial Swimming Pool, where approximately 170 attendees enjoyed the DJ and pool party, keeping the festive spirit going into the evening. Children were also treated to free ice-cream vouchers, adding to the fun and excitement. The Community Christmas Party was a wonderful reflection of the Meekatharra community spirit, bringing families, friends, and neighbours together to celebrate the festive season, strengthen connections, and create lasting memories.

The Shire of Meekatharra sincerely thanks everyone who attended and acknowledges the support of partner organisations who helped make the event possible. Special thanks to Westgold Resources Ltd for catering the community dinner, and to Yulella Aboriginal Corporation for organising the children's gifts and providing transport assistance on the day.

**Photo credits: Eleonora Zibetti**





# Community Happenings | 2025 Community Christmas Party

The 2025 Community Christmas Party was a joint partnership between Yulella Aboriginal Corporation and the Shire of Meekatharra.

Proudly supported by Westgold Resources Ltd, Communities of Focus, Meekatharra Community Resource & Visitor Centre, Mission Australia, Youth Focus and Contract Aquatic Services.

Photo credits: Eleonora Zibetti





# Community Happenings | Seniors Day 2025



## Honouring Our Elders: Meekatharra Seniors Day 2025

As part of WA Seniors Week 2025, the Shire of Meekatharra was pleased to host Meekatharra Seniors Day on 14 November, in partnership with the Meekatharra Community Resource Centre and Yulella Aboriginal Corporation.

Held at the Meekatharra Town Hall, the event brought together Elders and seniors for a relaxed and welcoming day of connection, inclusion, and celebration. Attendees enjoyed morning tea and lunch, music, indoor activities, and time to sit together, yarn, and share stories in a friendly and supportive environment.

The event was supported by Advocare, Department of Communities, and Lotterywest. Transport assistance was provided by Yulella Aboriginal Corporation, helping ensure Elders and seniors were able to attend and enjoy the day.

The smiles, laughter, and stories shared throughout the day highlighted the importance of recognising the wisdom, experience, and ongoing contributions of Elders within the Meekatharra community.

The Shire sincerely thanks everyone who attended and all organisations involved for working together to deliver a meaningful and respectful celebration of our Elders and seniors.





# Community Happenings | Community Spirit in Action

## Community Spirit in Action: Karalundi College Making a Difference

On 9 November, the Shire of Meekatharra was proud to support a wonderful community clean-up initiative led by students and staff from Karalundi College, demonstrating the true spirit of community pride and teamwork.

Students rolled up their sleeves and spent the day cleaning key public spaces across Welcome Park, Kangaroo Park, and the Information Bay, helping to keep Meekatharra clean, welcoming, and enjoyable for everyone. Their efforts were a great example of young people taking ownership of their town and making a positive difference through action.

Following the clean-up, the group came together at the oval for a well-earned meal before enjoying some downtime at the Meekatharra War Memorial Swimming Pool, celebrating a day of hard work, connection, and shared achievement.

The Shire sincerely thanks Karalundi College students and staff for their enthusiasm, teamwork, and commitment to caring for our community. Initiatives like this not only improve our shared spaces but also strengthen connections and foster pride in Meekatharra.

Small actions, when taken together, make a big difference and these young community leaders have set a fantastic example for us all.





# Community Event | **The Spirit of Meekatharra**

## THE *Spirit of Meekatharra* FESTIVAL

Scan to give us  
your feedback!



How was your 2025  
Spirit of Meekatharra experience?

Please share your feedback with us so  
that we can make improvements  
for future events

E: [cdo@meekashire.wa.gov.au](mailto:cdo@meekashire.wa.gov.au)  
M: 0438 938 605







# Christmas Day Emergency Services

*Lolly run!*



**Christmas Day**  
Thursday 25  
December 2025

Lolly run starts  
at **9:00am**

Shire of  
**Meekatharra**  
A Golden Prospect



# Community Happenings | Youth Services

## SCHOOL FOR POOL POLICY REMINDER

Meekatharra War Memorial Swimming Pool has a  
**No School – No Pool** policy in place.

This means all school-aged children and youth who permanently reside in Meekatharra must go to school to receive pool entry for each school day.



### Go to school each day to earn your pool band

Only students with a pool band get to enjoy afternoon swims!



### No School - No Pool

School aged children and youth are not permitted to use the pool during school hours, regardless of age.



We thank everyone for helping to support our children and youth to attend school.



## Kids Zone & Youth Centre

Kids Zone and the Youth Centre are open most of the year round. Both facilities provide after school programs for youth from ages 5yrs-17yrs and give them a safe space to connect with others.

Both areas have staff trained to supervise and guide the youth in what they want to do. The facilities are well equipped to provide a broad range of resources and activities to keep young minds busy.

Kids Zone welcomes children from 5yrs - 9yrs, children under 5 years must be accompanied by an adult.

The Youth Centre welcomes young people from 10yrs -17yrs. All youth are welcome to attend.

**Opening Hours** 3:00pm - 5:00pm | Monday to Friday

**Kids Zone:**

3:00pm - 5:00pm | Monday to Friday

**Youth Centre:** 6:00pm - 8:00pm | Tuesday & Thursday  
At the oval

For any enquiries, please contact us directly at **9980 0600** or email [shire@meekatharra.wa.gov.au](mailto:shire@meekatharra.wa.gov.au)







**St John**



search St John Volunteer



**Our volunteers are** *Legends*  
**And you can be one too!**

## **Seeking Volunteer Support Officers**

Help restock, tidy, support, and keep us running!

## **Benefits Include**

Free ambulance cover, training, discounts, events, rewards, and recognition.



**Want to find out more? Contact**

0437 681 562

[meekatharra.subcentre@stjohnwa.com.au](mailto:meekatharra.subcentre@stjohnwa.com.au)

28 November 2025

## MEEKATHARRA DHS NEWS



*'At Meekatharra DHS we have high expectations to become lifelong learners, show respect for culture, ourselves and others, and strive for a strong future.'*



**Meekatharra**  
District High School

**Address:** 77 Savage Street,  
MEEKATHARRA, WA 6642

**Telephone:** (08) 9981 0800

**Email:**

[meekatharra.dhs@education.wa.edu.au](mailto:meekatharra.dhs@education.wa.edu.au)

### Upcoming Events

Thursday 27 Nov On Country Excursion (Yr K-3)

Friday 28 Nov On Country Excursion (Yr 4-11)

Monday 1 Dec – School Council Meeting 3pm

Wednesday 3 Dec – Year 1/2 Excursion to Information Bay Creek

Monday 8 Dec – Kindy 2026 orientation – 9am

Thursday 11 Dec – End of Year Awards evening – from 5pm

Tuesday 16 Dec – Year 7 (2026) parent information session – 3pm

Wednesday 17 Dec – Student reports sent home

Thursday 18 Dec – Last day for students

### Visitors

**TLG (Teach Learn Grow)**

Week 8

**EON Foundation**

Week 8 & Week 10

**Pastor Michael** Week 9

### A Message from the Principal

As we approach the end of term, our staff and students remain busy with a range of exciting activities and events. We appreciate the continued support from our families and community as we celebrate learning and wrap up 2025 on a positive note.

#### End-of-Year Awards Evening

An invitation to our End-of-Year Awards Evening has been included in this newsletter. Everyone in our community is welcome to attend. This special event will be held on the grass outside the Administration Building and is a wonderful opportunity to celebrate student achievement, acknowledge our Year 6 students as they graduate, and farewell staff who are moving back to Perth or interstate. There will also be plenty of cheerful songs from our students and presentations to help us get into the Christmas spirit. We look forward to seeing you there.



#### Semester 2 Student Reports

Semester 2 student reports will be sent home with students on Wednesday 17 December. Reports for students who are absent on this day will be posted home.

#### 2026 Kindergarten Applications

If your child turns 4 on or before **30 June 2026**, they are eligible to enrol in Kindergarten for 2026. Eligible birthdates fall between **1 July 2021 and 30 June 2022**. To enrol, please visit the school office to complete an application form before Friday 19 December.



#### School Board – Expressions of Interest for 2026

The School Board plays a vital role in supporting strong governance and ensuring school resources are used effectively to meet the needs and expectations of our community. We welcome expressions of interest from members of the Meekatharra community who may wish to join our School Board in 2026. If you would like more information, please contact me on 9981 0800.

**Mr Ross Griffin**  
Principal

#### From the Deputy Principal - Secondary

This term at MDHS, we hosted another Career Taster event called 'Squadron'—a Drone Fundamentals Workshop presented by the University of Western Australia in partnership with Central Regional TAFE's Career Taster Program. 'Squadron' introduces students to coding, artificial intelligence, and geospatial science through hands-on activities. The presenters delivered an engaging workshop paired with a mini drone light show, which our students thoroughly enjoyed.





# Community Happenings | Meekatharra DHS

We were also pleased to welcome visiting students from Karalundi College. The session introduced Years 6–11 to STEM learning through drone technology, covering drone safety, coding, and remote-control flying. Students had the opportunity to work with two types of drones—one for coding challenges and one for manual flight—which encouraged curiosity, teamwork, and problem-solving in a fun and practical way.



## Growing Healthy Futures with EON Foundation

Our secondary students have been getting their hands dirty in the school garden thanks to our partnership with the EON Foundation. The program is all about building healthy habits through practical learning—combining nutrition education with the joy of growing fresh produce.

Students have been busy tending to the garden beds, learning how to care for plants, and harvesting seasonal vegetables. These activities not only teach valuable life skills but also encourage teamwork and responsibility. We now have a new produce stand in the front office, and we've been sharing our fresh vegetables with our school community, as well as exploring simple, healthy recipes using ingredients grown right here at school.

The EON Foundation's support helps us promote sustainability and wellbeing in a fun, hands-on way. It's inspiring to see our students connect with nature and understand where their food comes from.

**Mrs Helen Higgins**  
Deputy Principal



**EON**  
Aboriginal  
Foundation





HLTAID011

# Provide First Aid

1 day course + online learning



St John Ambulance (Western Australia) Ltd | RTO 0392  
ACN 165 969 406; ABN 55 028 468 715



Shire of  
**Meekatharra**  
A Golden Prospect

UPCOMING  
EVENTS

SCAN  
ME!



Spirit of Meekatharra Festival 2025  
Feedback Survey



Your body  
converts  
alcohol  
to poison.

alcoholthinkagain





# Community Facilities | Available For Hire


## Lloyds Conference Room

Lloyd's Outback Plaza Conference Room is a state-of-the-art conferencing facility set to accommodate a maximum of 25 people.

**Location:** Lloyd's Outback Plaza, 64 Main Street, WA 6642

Amenities include kitchenette, external toilets to conference room (incl. disabled access toilet) and on-street parking.

**Contact the Meekatharra Community Resource & Visitor Centre to hire this venue.**

 **(08) 9980 1811**

 **hello@meekacrc.com.au**



Lloyds Plaza Conference Room

## Town Hall

One of the most important buildings in town, our beloved Meekatharra Shire Hall is a multi-purpose space where your team, or family can utilise for almost anything.

This space accommodates a maximum of 250 people.

**Location:** Savage Street, WA 6642

Amenities include: kitchen, walk-in cool room, toilets, outdoor twin BBQ, separate bar area, equipment hire, projector, inflatable screen and on-street parking.

### Fees & Charges

Please contact us for a full break down of charges dependent on your needs.



Meekatharra Shire Hall

## Sporting Complex and Oval

Looking for a space to use for a big event in town?

The Meekatharra Sporting Complex and Oval might be the space for you. It boasts a luscious green oval with peaceful views of the area.

It is accompanied with an indoor function space that accommodates a maximum of 50 people.

**Location:** Landor Meekatharra Road, WA 6642

Amenities include: kitchen, internal & external toilets, outdoor twin BBQ, equipment hire and ample parking.

### Night Light Usage

\$10.00 per hour - Basketball, Tennis Courts, Oval

Night light key bond \$50.00



Sporting Complex and Oval

Please contact us directly  
for any queries, or to book  
a facility.



**08 9980 0600**



**shire@meekatharra.wa.gov.au**



**www.meekashire.wa.gov.au**



# Community Facilities | Sport & Recreation



## Gym

The gym is located at the Sporting Complex off the Landor Meekatharra Road behind the main building and can be accessed daily.

This unmanned gym has all the equipment you will need to complete your workout.

Access to the gym is with a membership which can be purchased from the Shire Office. Make sure to sign up and check out the space.

**Access is restricted to 16 years of age and above.**

**Opening Hours:** 5:00am - 10:00pm

**Fees & Charges:** (as of July 2024)

\$20 once-off sign up fee + then \$32 per month

Concessions available with proof of eligibility.

Fees apply for lost cards

## Meekatharra War Memorial Pool Open: October - March

The Meekatharra War Memorial Swimming Pool is located on Main Street in the center of town. A much loved community asset, it's the perfect place to cool off during the warm summer months, socialise with friends or improve your fitness.

**Seasonal Hours:** 1 October to 31 March each year

**Monday - Friday:** 12:00pm to 6:00pm  
6:00pm to 7:00pm - Adults Only

**Saturday - Sunday:** 11:00am to 6:00pm

### Fees & Charges

**Community usage is now FREE for the 2025/26 pool season.**

The 'Pool for School' policy still remains in place during school terms.



Please contact us directly  
for any queries, or to book  
a facility.



08 9980 0600



shire@meekatharra.wa.gov.au



www.meekashire.wa.gov.au





# Meekatharra War Memorial Swimming Pool



## FREE POOL ENTRY FOR THE 2025/26 POOL SEASON

The Shire of Meekatharra is happy to announce that public entry is free to the public for the 2025/26 pool season.

The **School for Pool** policy still remains in place.



### Christmas **2025/26** POOL HOURS

Wednesday	24th Dec	(Christmas Eve)	OPEN
Thursday	25th Dec	(Christmas Day)	OPEN
Friday	26th Dec	(Boxing Day)	OPEN
Saturday	27th Dec		OPEN
Sunday	28th Dec		OPEN
Monday	29th Dec		OPEN
Tuesday	30th Dec		OPEN
Wednesday	31st Dec		OPEN
Tuesday	1st Jan	(New Years Day)	OPEN

*Yes! We are open!!*





## Community Happenings | What's On!

# DECEMBER

2 0 2 5

MON	TUE	WED	THU	FRI	SAT	SUN
1	2	3 Containers for Change  8am - 12pm Yulella Aboriginal Corporation	4	5 Community Christmas Party 3:30pm - 6:00pm Town Hall 	6 Containers for Change  8am - 12pm Yulella Aboriginal Corporation	7
8	9	10 Containers for Change  8am - 12pm Yulella Aboriginal Corporation	11	12 	13  Meeka Markets 9:30am - 1:30pm Main Street	14
15	16 	17	18	19 Council Meeting 4:00pm 	20 Meeka Creatives 9am - 11am Lloyd's Plaza	21
22	23 	24 	25 Public Holiday Christmas Day 	26 Public Holiday Boxing Day 	27 	28 
29 	30 	31 	1 	2 	3 	4 



Community Happenings | What's On!

JANUARY

2 0 2 6

MON	TUE	WED	THU	FRI	SAT	SUN
			1 Public Holiday New Years Day  Shire Office Holiday Closure	2  Shire Office Holiday Closure	3	4
5	6	7 Containers for Change 8am - 12pm Yulella Aboriginal Corporation	8	9	10 Containers for Change 8am - 12pm Yulella Aboriginal Corporation	11
12	13	14 Containers for Change 8am - 12pm Yulella Aboriginal Corporation	15	16	17 Council Meeting 11:30am	18
19	20	21 Containers for Change 8am - 12pm Yulella Aboriginal Corporation	22	23	24 Containers for Change 8am - 12pm Yulella Aboriginal Corporation	25
26 Public Holiday Australia Day	27	28 Containers for Change 8am - 12pm Yulella Aboriginal Corporation	29	30	31 Containers for Change 8am - 12pm Yulella Aboriginal Corporation	1

# Community Facilities | Sport & Recreation

## Squash Court

The Meekatharra Squash Court is located behind the Club Rooms at the Sporting Complex off the Meekatharra Landor Road. The key and air-con tokens are available from the Shire Office.

This is an unmanned facility.

Unfortunately we do not hire racquets or balls.

**Opening Hours: 5:00am - 10:00pm**

**Fees & Charges:** (as of July 2024)

- Court Hire - \$10 (per hour/token)
- Key Bond - \$50 (cash only)



## Basketball Courts

The basketball courts are located at the Meekatharra Sporting Complex off the Meekatharra Landor Road and is a free-usage community space.

This is an unmanned recreational space.

**Opening Hours: 5:00am - 10:00pm**

**Fees & Charges:** (as of July 2024)

- Court Hire - No charge
- Lights - \$10 per hour
- Key Bond (lights) - \$50 (cash only)



## Tennis Court

The Tennis Court is located at the Sporting Complex off the Meekatharra Landor Road and is a free use community facility.

This is an unmanned recreational space.

Unfortunately we do not hire racquets or balls.

**Opening Hours: 5:00am - 10:00pm**

**Fees & Charges:** (as of July 2024)

- Court Hire - No charge
- Lights - \$10 per hour
- Key Bond (lights) - \$50 (cash only)







## Library & Museum

The Meekatharra Public Library is located at the Shire Office and is combined with a small museum. The library is a great resource and available to all members of the community. The library contains a comprehensive collection of fiction, and non-fiction books, large print books, audiobooks, and DVDs for adults and children. There is a regular exchange of books to ensure up to date and varied stock.

A selection of new books is displayed on our feature tables until the next supply of stock arrives.

A large variety of resources are available upon request and include titles in audio format, large print, languages other than English, and an extensive DVD collection.

You can also apply for the following:

- **Membership** - There is no cost for library membership for residents of Meekatharra.
- **Visitor Membership** - Visitors can become a member of the Meekatharra Library. The requirements are the same as for residents.
- **Borrower Rights** - Please bring your library card when borrowing or renewing items. Items can be borrowed for three weeks.

### Opening Hours:

9:00am - 4:00pm

Monday - Friday

\*closed Public Holidays

75 Main Street  
08 9980 0600  
shire@meekatharra.wa.gov.au



**VOL\_NTEER  
WE NEEDU**

[wa.gov.au/volunteering](http://wa.gov.au/volunteering)

Shire of  
**Meekatharra**  
A Golden Prospect

## Advertising in the Meekatharra Dust

The Meekatharra Dust is a community newsletter produced by the Shire of Meekatharra. It highlights local events and helps to distribute information relevant to the area.

Distribution channels are via postal subscriptions, online views on the website and local distributors.

**Local non-for-profit organisations are eligible to receive free advertising.**

To advertise in the Meekatharra Dust, please contact the Community Development Officer on [cdo@meekashire.wa.gov.au](mailto:cdo@meekashire.wa.gov.au).

SIZE	COLOUR	B & W
Full Page	\$77.00	\$49.50
Half Page	\$44.00	\$27.50
Quarter Page	\$27.50	\$16.50
Eighth Page	\$16.50	\$11.00

Prices (from 1st of July 2025)

# Service Provider | Mission Australia



Mission Australia helps people move towards independence by standing together with Australians in need until they can stand for themselves

Mission Australia provides a range of community services in the Midwest and Gascoyne regions of Western Australia.

#### Family and Domestic Violence Service

Monday to Friday 8:00am – 4:00pm Call "000" or Local Police on 08 9918 7120 24-hour service through Police.

#### Public Tenancy Support Service

Monday to Friday 8:00am – 4:00pm

#### Remote Education and Learning – Ijaba

Monday to Friday 8:00am – 4:00pm

#### Grandparents Raising Grandchildren

Monday to Friday 8:00am – 4:00pm

#### Mental Health Support Service

Monday to Friday 8:00am – 4:00pm

#### Meekatharra Housing Support Service –

##### Gumbarra Urda

Monday – Friday 8:00am – 4:00pm

#### Emergency Relief

Monday 9:00am – 11:00am

Phone for an appointment on the day, walk-ins accepted

#### Mission Australia Meekatharra

61 Main Street/PO Box 59

Meekatharra WA 6642

08 9956 5100

## Midwest and Gascoyne Services Meekatharra



### Family and Domestic Violence Service

This service offers a community response to women and their children (if present) who are experiencing domestic violence or are concerned about their safety.

#### Support includes:

- Crisis accommodation up to 72—hours or with a Police Order
- Arranging transportation and alternative accommodation
- Essential emergency items such as food
- Links to counselling and other culturally appropriate services

### Meekatharra Housing and-Support Service—Gumbarra Urda

Transitional Accommodation will provide a pathway for families, women and children who have a desire to transition out of unsafe and/or unstable housing situations with support. MHSS will provide medium term accommodation combined with case management and community development.

### Remote Education and Learning—Ijaba

This service works with families and community to increase school attendance in Meekatharra.

Our team acknowledges that school attendance is a 'whole of community' responsibility and has adopted a family focused model to work specifically with parents, carers and other family members as well as Elders, the school, local residents, community organisations and government agencies.

Our aim is to identify and address the short and long term challenges that families encounter, which may impact on children and young people attending and staying at school.

### Public Tenancy Support Service

This service supports people living in Public Housing who face difficulty maintaining their tenancy.

Our team aims to support tenants to increase their ability to avoid reaching the point of eviction, debts and property standards.

### Mental Health Support Service

This service provides information support, advocacy, referral and counselling to Aboriginal people living in Meekatharra, Cue and Mount Magnet who experience and live with mental ill health.

Our team adopts a recovery-orientated model, placing significant emphasis on the choices and decisions of the individual. We aim to support people to make positive changes and reach their goals while continuing to participate fully in the community.

### Grandparents Raising Grandchildren

This service supports grandparents living in Meekatharra, Cue and Mount Magnet who are the sole or primary carer of their grandchildren.

### Emergency Relief

This service is offered to people experiencing significant financial distress, homelessness and other life challenges.

Immediate relief is available once every three months in the form of food hampers. In addition to referrals to other services. Appointments to Emergency Relief are essential.



# Service Provider | Christmas / New Year Operational Hours



## RUBBISH SERVICES



## Christmas & New Year Rubbish Schedule

### December collection dates:

- Friday 12/12/2025
- Tuesday 16/12/2025
- Friday 19/12/2025
- Tuesday 23/12/2025
- Tuesday 30/12/2025

### New Year week bins as normal:

- Friday 2/01/2026
- Tuesday 6/01/2026

Have a Merry Christmas and  
a safe New Year!

# Shire Services | Christmas / New Year Operational Hours

WISHING YOU A

*Merry  
Christmas*

AND A SAFE  
NEW YEAR



**The Shire Administration Office and Shire Depot services will be CLOSED from:**

12noon, Friday 19th December 2025  
until Friday 2nd January 2026

**Reopening: Monday 5th January, 2026 at 9:00am**

---

**Meekatharra Youth Services will be CLOSED from:**

12noon, Friday 19th December 2025  
until Friday 2nd January 2026

**Reopening: Monday 5th January, 2026 at 10:00am**  
to continue our school holiday program.

---

**For emergencies, please call 08 9980 0600.**



## Snake Bites

### What to do:

1. Follow DRSABCD St John WA Action Plan.
2. Urgent medical aid. Call Triple Zero (000) for an ambulance.
3. Ensure the casualty does not move.
4. Lay the casualty down, rest and reassure.
5. If the bite is on a limb, apply a broad pressure bandage over the bite site as soon as possible.
6. Then apply a further elasticised or firm bandage - start at fingers or toes and move up the limb as far as can be reached. Apply tightly but without stopping blood flow.
7. Splint the limb including the joints on either side of the bite.
8. Write down the time that the casualty was bitten and when the bandage was applied.
9. If the casualty becomes unconscious and not breathing normally, Commence CPR and Defibrillation.

### Signs and symptoms

- Visible in an hour or more after the person has been bitten.
- In children, signs and symptoms may appear within minutes.
- Paired fang marks, but often only a single mark or a scratch mark may be present. Marks or scratches may bleed.
- Nausea, vomiting and diarrhoea.
- Headache, drowsiness, giddiness or faintness.
- Double or blurred vision, drooping eyelids.
- Voice changes, trouble speaking or swallowing. Pain or tightness in the throat, chest or abdomen.
- Breathing difficulties, respiratory weakness or arrest.



**Do not** wash the venom off the skin (it may aid in identification).

**Do not** cut the bitten area and try to suck the venom out.

**Do not** use a tourniquet.

**Do not** try and catch the snake.



**St John**



## Pet Safety

### Parvovirus detected in Meekatharra

Keep your pets safe, and ensure they are vaccinated.



### Community Notice: Parvovirus detected in the Shire of Meekatharra

The Shire of Meekatharra has been advised of a recent detection of canine parvovirus (parvo) in the region. We urge all dog owners to stay alert, take precautions and ensure their pets are fully vaccinated.

### What is Canine Parvovirus?

Parvo is a highly infectious and life-threatening virus, often fatal in puppies and unvaccinated dogs. The virus spreads easily and can survive on surfaces and in soil for over a year, making vigilance essential.

### Symptoms to Watch For

Symptoms typically appear 4–10 days after infection and can include:

- Loss of appetite
- Vomiting
- Lethargy or sudden lack of energy
- Severe, often bloody diarrhoea

If you notice any of these signs, seek veterinary attention immediately.



# Lifestyle | Community Alert

## Pet Safety

### Why Vaccination Matters

The mortality rate for untreated or unvaccinated puppies and dogs is over 90%.

To protect your pets:

- Keep puppies away from public places and unvaccinated dogs until fully vaccinated
- Follow recommended vaccination schedules:

**Puppies:** 6–8 weeks, 10–12 weeks, and 14–16 weeks,

**Adult dogs:** maintain C4 or C5 vaccinations as advised by your vet.

### Reducing the Spread

For households with confirmed or suspected exposure:

- Sanitise surfaces, bowls and equipment using bleach or hospital-grade disinfectant.

Allow solutions to sit for 10–30 minutes, then air-dry in sunlight.

- Dispose of bedding and clothing exposed to the virus, or wash in very hot water with disinfectant and bleach.

**Please note: yards cannot be fully disinfected.** Only allow fully vaccinated dogs in areas where parvo has been detected.

We encourage all dog owners to stay cautious, keep vaccinations up to date and contact your local vet if you have concerns.

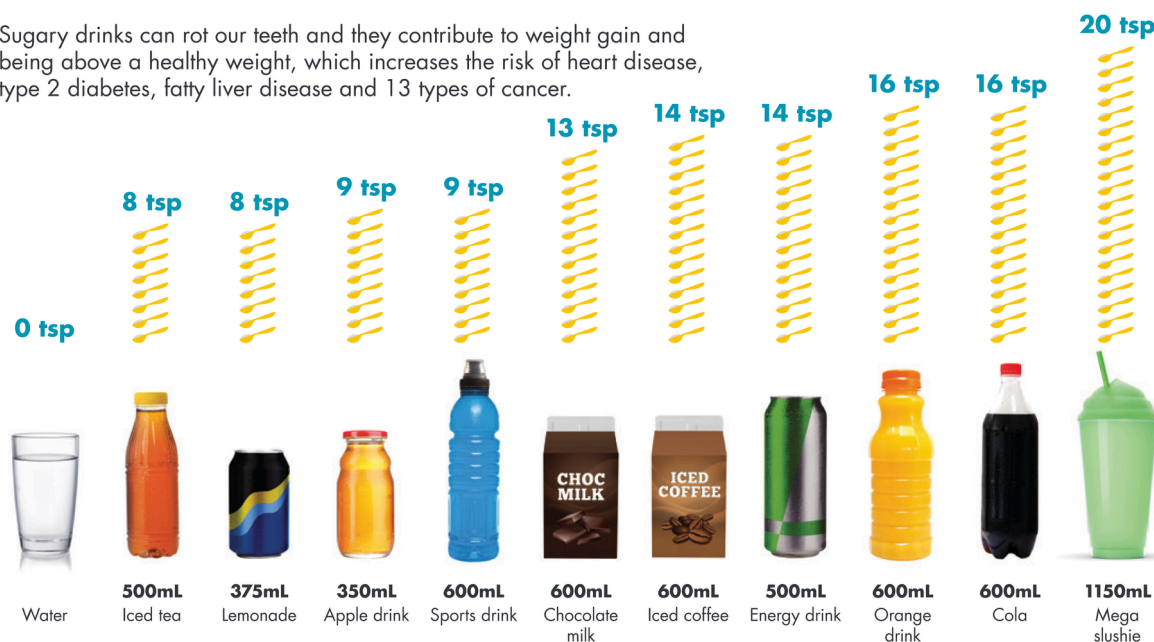
Keeping our pets safe is a shared responsibility.

**Thank you for helping protect our community's four-legged friends.**



## HOW MUCH SUGAR IS IN YOUR DRINK?

Sugary drinks can rot our teeth and they contribute to weight gain and being above a healthy weight, which increases the risk of heart disease, type 2 diabetes, fatty liver disease and 13 types of cancer.



= 4 grams of sugar

Government of Western Australia  
Department of Health

Cancer Council  
WA

ADA  
AUSTRALIAN DIETETIC ASSOCIATION

[livelighter.com.au](http://livelighter.com.au)

**LIVELIGHTER**  
A

06/2023 146590



Department of Local Government,  
Industry Regulation and Safety



## Regional Column

---

**Consumer Protection** 140 William Street Perth Western Australia 6000  
Email: [cpmedia@lgirs.wa.gov.au](mailto:cpmedia@lgirs.wa.gov.au) | [www.consumerprotection.wa.gov.au](http://www.consumerprotection.wa.gov.au) | [www.wa.gov.au](http://www.wa.gov.au)

28 November 2025

**With Senior Regional Officer for Midwest – Natasha Pirrottina**

### One ride can change everything

Quad bikes are not toys and along with the Australian Competition and Consumer Commission (ACCC), Consumer Protection is encouraging farmers, partners, parents and carers to protect their loved ones when riding these powerful machines.

Ahead of the summer holidays the ACCC has launched the 'One ride can change everything' safety awareness campaign. Although some quad accidents will be relatively minor, others can have devastating, lifelong consequences for the rider and their families.

Since 2011, 235 Australians have died in quad bike incidents, with men accounting for more than 80% of fatalities, figures from [SafeWork Australia](http://SafeWorkAustralia.gov.au) show. Twenty-three of those deaths occurred in Western Australia, with two of them being children aged under 10. In fact, Australia-wide children under-16 make up more than a quarter of all emergency department presentations relating to quad bike injuries.

You should never let kids ride quads made for adults, even as passengers. When they ride an adult-sized quad bike they are often over-confident in their ability to control the bike. Children also don't have the skills or physical strength to handle the power of these bikes and it can have catastrophic outcomes.

Despite being marketed as "all-terrain vehicles", quad bikes cannot safely go anywhere and everywhere. Steep slopes or rough terrain increases the risk of a roll over. Even at slower speeds, these bikes can topple over and crush or suffocate the rider with the hundreds of kilos these machines weigh.

Side-by-sides are another all-terrain vehicle growing in popularity and unfortunately this means so are the incidents. Many fatalities and serious injuries occur when occupants don't use or remove safety features from their vehicles such as seatbelts, doors or netting. Coronial inquests into fatalities involving side-by-sides have found that if victims had been wearing seatbelts at the time of the accident, they would not have been thrown from the cabin.

There are three golden rules to follow when using quad bikes to help you, your loved ones, friends and work colleagues stay safe. Always wear a helmet, but make sure it's the right fit, and done up firmly. Adult-sized helmets don't protect child-sized heads, and no helmet works if it's left in the shed.



## Lifestyle | Consumer Protection



Department of Local Government,  
Industry Regulation and Safety



Make sure your quad bike is fitted with rollover protection, also called an operator protection device (OPD). If the quad topples over it will be held off the ground to provide a crawl out space. Finally, children under the age of 16 should never ride an adult quad bike, even when an adult is present.

When it comes to side-by-sides, always wear a seat belt and never let children drive. It's also worth checking the manufacturer's advice before letting children ride side-by-side vehicles as passengers.

One ride can change everything. Don't risk it, ride safe every time. Learn more with the national quad bike and side-by-side vehicle guide - [productsafety.gov.au/quadbikes](https://productsafety.gov.au/quadbikes)

## Lifestyle | Season's Greetings!

*Merry  
Christmas!*

*and Happy  
New Year!*

**SHANE LOVE MLA**

**MEMBER FOR MID-WEST**

📍 1/17 Moreton Tce, Dongara

☎ (08) 9927 2333

✉ [Mid-West@mp.wa.gov.au](mailto:Mid-West@mp.wa.gov.au)

📍 20 Robinson St, Carnarvon

☎ (08) 9941 2999



## HEALTHY ZUCCHINI SLICE RECIPE



Prep: 30 min Cook: 45 min Servings: 6



### Ingredients

- ▲ 5 eggs <https://livelighter.com.au/recipe/256/zucchini-slice>
- ▲ pepper
- ▲ 1 large zucchini, grated
- ▲ 400 g carrot, sweet potato or pumpkin, peeled and grated
- ▲ 1 1/2 cups canned corn kernels or frozen peas, drained
- ▲ 1 medium brown onion, peeled and diced
- ▲ 2 tsp dried mixed herbs
- ▲ 3/4 cup wholemeal self-raising flour
- ▲ 1 cup reduced-fat cheddar cheese, grated
- ▲ olive or canola oil spray
- ▲ 3 large tomatoes, sliced, optional
- ▲ green side salad, to serve

☐ **Cook Mode** Prevent your screen from going dark

### Method

1. Preheat oven to 200°C (180°C fan forced).
2. Whisk eggs in a medium jug, season with black pepper and set aside.
3. Squeeze grated vegetables to remove some of the excess moisture.
4. In a large bowl combine all ingredients except tomato. Add eggs and stir mixture until well combined.
5. Spray a large baking dish with oil. Pour in zucchini mix and flatten with a spoon. Cover with tomato slices arranged in a single layer.
6. Bake for 40-45 minutes or until firm and golden brown.
7. Rest in the pan for 10 minutes before dividing into 6 pieces and cutting into slices. Serve with a green side salad.

**Variation:** Substitute other vegetables including baby spinach, cherry tomatoes, broccoli florets, chopped asparagus or mushrooms, grated parsnip or potato and add fresh parsley, basil or dill.

**Serving Suggestion:** Serve hot or cold, as a healthy favourite for toddlers, children and adults alike. Great to take on a picnic, served as a finger food cut into small squares.





Department of  
Primary Industries and  
Regional Development

## Backyard Buddies

Your monthly guide to pests, weeds and diseases

November 2025

### Lady... bug, bird, beetle?



Transverse ladybird beetle larva (left), adult (centre) and 28-spotted ladybird adult (courtesy of MyPestGuide® Reporter)

#### A name rooted in folklore

Ladybugs or ladybirds, as we often call them, are some of the most easily recognised and beloved insects around. With their tiny size, bright colours, and distinctive spotted patterns, they're hard to miss. But have you ever wondered about their name? They're not birds, nor are they true bugs. In fact, they are small beetles belonging to the Coccinellidae family. Interestingly, the "lady" in their name has a historical origin rather than a gendered one.

The term ladybird dates back to medieval Europe, when farmers prayed to the Virgin Mary - often referred to as "our Lady" - for protection from crop-damaging pests. According to folklore, shortly after these prayers, small red beetles appeared and began feeding on the harmful insects, saving the harvest. As a result, these helpful beetles became known as "our Lady's birds". Their red colouring was said to represent Mary's cloak, and their black spots symbolised her seven sorrows. Whether fact or folklore, the name has endured for centuries.

#### Beetle biology

Australia is home to at least 350 species of ladybird beetles and all species undergo complete metamorphosis: egg → larva → pupa → adult. The

larval stage looks more crocodilian than beetle-like and is far less recognisable than its adult form. This is particularly important, as it's when they consume the most prey, or, in pest species, the most plant material.

In Western Australia, the most encountered species is the native transverse ladybird (*Coccinella transversalis*). They range in colour from pale yellow to orange to deep red with the black markings. These are highly effective predators of aphids, scale insects, and other soft-bodied pests, making them valuable allies in gardens and on farms. Another common species is the 28-spotted ladybird (*Epilachna vigintioctopunctata*), native to southeastern Asia, but naturalised in Australia, this is a plant-eating species considered a pest, especially on crops like potatoes and tomatoes. Both adults and larvae feed on leaves, causing significant damage.

#### Spotting them

Ladybirds are most active during the warmer months of spring and summer, so it's a great time to spot these colourful beetles and their cool looking larvae. You might spot a pest or a predator - it's worth checking whether it's there to save your plants or devour them!



#### Report your observations

MyPestGuide® Reporter via app or online [mypestguide.agric.wa.gov.au](https://mypestguide.agric.wa.gov.au)

Pest and Disease Information Service (08) 9368 3080 | [padis@dpird.wa.gov.au](mailto:padis@dpird.wa.gov.au)

# Know your standard drinks

A standard drink might be less than you think.



The Australian Alcohol Guidelines  
recommend no more than

**10** standard drinks  
a week

&

**4** standard drinks on  
any day

to reduce the risk of harm from  
alcohol-related disease or injury.

## BEER Full Strength

4.8%  
alc/vol

2.2



Pint Glass  
570ml

1.6



Schooner Glass  
425ml

1.4



Bottle or Can  
375ml

## BEER Mid Strength

3.5%  
alc/vol

1.6



Pint Glass  
570ml

1.2



Schooner Glass  
425ml

1.0



Bottle or Can  
375ml

## WINE Red

13.5%  
alc/vol

1.6



Average  
Restaurant Serve  
150ml

1.0



Standard Serve  
100ml

8



Bottle  
750ml

## WINE White

11.5%  
alc/vol

1.4



Average  
Restaurant Serve  
150ml

0.9



Standard Serve  
100ml

6.8



Bottle  
750ml

## CHAMPAGNE

12%  
alc/vol

1.4



Average  
Restaurant Serve  
150ml

7



Bottle  
750ml

## SPIRITS

40%  
alc/vol

1.0



Shot  
30ml

1.5



Pre-Mix Can  
375ml (5% alc/vol)

22



Bottle  
750ml



Scan here

Try our online tool to see how many  
standard drinks are in your typical pour.

**alcoholthinkagain**

alcoholthinkagain.com.au





### Animal Management

We can treat your animals for parasites and give you some tips on keeping a healthy parasite free animal



### Pest Control treatments

We can deploy cockroach and mice traps throughout your house and give you some tips on how to keep them away



### Community Housing

We can complete a Healthy Home Check on your house & fix minor plumbing issues along with much more!



### Distribution

We can provide you with soaps, linen, emergency relief meals if eligible, and much more!



### Education

We do education sessions on disease prevention and provide tips and tricks on how to keep your home disease free

Call Melissa on 9980 1339



Core Services

We are now able to assist NDIS participants with their Core Service needs.

FOOD FOR THE MOB

TRANSPORT

SERVICES FOR APPOINTMENTS

YARD & GARDENING SERVICES

SOCIAL PARTICIPATION CLASSES

HOUSE CLEANING



For more information please contact our Community Hub Coordinator

Email: [communitycoordinator@yulella.org.au](mailto:communitycoordinator@yulella.org.au)

Phone: 0499 462 829

M E E K A T H A R R A



ACCOMMODATION CENTRE

Open Daily 6.00am—9.00pm

Catering for your special function? Email us for a quote on

[bookings@meekatharraaccomodation.com.au](mailto:bookings@meekatharraaccomodation.com.au)

or call on 99811253





Meekatharra

# Commercial Hotel

## Facilities:

- Hotel/ Motel
- Pub
- Bottle'o
- Outdoor Beer Garden
- Air conditioned Dining Room

## Located at:

77 Main Street,  
Meekatharra, 6642

*We serve excellent  
counter meals daily*

## Lunch

12 noon - 1:30 pm  
(Mon-Sat)

## Dinner

6-8 pm  
(Sun-Sat)



Motel Rooms



Motel Rooms

## For bookings and enquiries:

### Telephone

99811020

### Email

commieh@westnet.com.au

### Website

www.commercialmeeka.com.au

## Accommodation includes

- 18 Modern Motel units with en suite, Tv, & Air con-
- Located at the rear of Hotel with enclosed parking-
- Traditional Hotel rooms with TV & air con-
- Located upstairs in original building-



Beer Garden



Pub





# Activities

## Word Search

### Monkey Forest Word Search

S	C	E	T	S	E	E	D	N	E	E	Q	Y	F
R	M	I	F	R	I	S	A	S	O	I	E	O	E
L	O	E	W	I	N	Y	A	L	E	C	R	R	A
M	N	W	G	A	F	N	W	A	G	E	O	E	I
N	K	H	R	H	R	U	P	P	S	E	N	I	K
G	E	E	A	L	U	P	R	T	N	L	R	S	L
R	Y	A	S	C	L	A	M	O	F	C	O	I	R
O	E	T	S	E	R	I	L	O	M	A	A	W	A
O	M	A	C	A	Q	U	E	T	R	O	P	A	Q
M	T	R	E	E	E	D	L	I	W	O	C	R	B
R	I	R	F	A	E	L	R	L	C	L	C	R	K
T	I	U	R	F	Q	B	E	F	O	A	G	C	R
S	E	B	A	B	Y	O	R	A	O	A	F	A	O
Y	A	L	P	L	B	A	N	A	N	A	G	A	D

MOROCCO  
BABY  
FUR  
MONKEY  
FOREST  
PLAY  
WILD  
GRASS  
BANANA  
ALGERIA  
TREE  
SEED  
GROOM  
WHEAT  
APPLE  
LEAF  
FRUIT  
MACAQUE

Play this puzzle online at : <https://thewordsearch.com/puzzle/982999/>

## Sudoku

			6					
	2			4			3	
		1					7	
	9				5			8
	7			9				2
	3						6	
6				2	8			
2		9	1			4		
						5		7

#13707

Difficulty: hard

9		7	3				1	
							3	
			8	5	7			
3				6				
				7			2	
	5	2						
4		9						2
1				3			4	
	3		5		2		8	1

#209285

Difficulty: easy

## Solutions

S	C	E	T	S	E	E	D	N	E	E	Q	Y	F
R	M	I	F	R	I	S	A	S	O	I	E	O	E
L	O	E	W	I	N	Y	A	L	E	C	R	R	A
M	N	W	G	A	F	N	W	A	G	E	O	E	I
N	K	H	R	H	R	U	P	P	S	E	N	I	K
G	E	E	A	L	U	P	R	T	N	L	R	S	L
R	Y	A	S	C	L	A	M	O	F	C	O	I	R
O	E	T	S	E	R	I	L	O	M	A	A	W	A
O	M	A	C	A	Q	U	E	T	R	O	P	A	Q
M	T	R	E	E	E	D	L	I	W	O	C	R	B
R	I	R	F	A	E	L	R	L	C	L	C	R	K
T	I	U	R	F	Q	B	E	F	O	A	G	C	R
S	E	B	A	B	Y	O	R	A	O	A	F	A	O
Y	A	L	P	L	B	A	N	A	N	A	G	A	D

Solution of sudoku #13707:

3	8	4	6	1	7	2	5	9
7	2	5	8	4	9	6	3	1
9	6	1	3	5	2	8	7	4
1	9	6	2	3	5	7	4	8
5	7	8	4	9	6	3	1	2
4	3	2	7	8	1	9	6	5
6	4	7	5	2	8	1	9	3
2	5	9	1	7	3	4	8	6
8	1	3	9	6	4	5	2	7

Solution of sudoku #209285:

9	6	7	3	2	4	5	1	8
5	4	8	6	9	1	2	3	7
2	1	3	8	5	7	4	6	9
3	7	1	2	6	5	8	9	4
8	9	4	1	7	3	6	2	5
6	5	2	4	8	9	1	7	3
4	8	9	7	1	6	3	5	2
1	2	5	9	3	8	7	4	6
7	3	6	5	4	2	9	8	1

Activities

Colouring Sheet

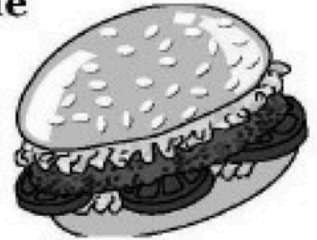




# Meekatharra Corner Store

Corner of Main & High Streets, Meekatharra

**Ph: 9981 1151**



**BP Fuel & Lubricants**  
**Premium Unleaded Fuel now available**  
**Auto Accessories**  
**Kleenheat Gas**  
**Key Cutting**  
**Take-Away Food**  
**Asian Food**

**A range of Asian Ingredients and utensils available for sale**



**Burgers**  
**Rolls**  
**Sandwiches made to order**  
**Bottled water deliveries**

**Tyre Repairs**  
**Driveway Service**



## Extraordinary Outback Experience



Self contained units  
Twin rooms  
Camp sites  
Camp kitchen  
Fuel  
Licensed store  
Lawns & shade

### Mt Augustus Tourist Park

Heart of the Gascoyne  
at the World's  
Biggest Rock



0899439527

[mtaugustustouristpark@skymesh.com.au](mailto:mtaugustustouristpark@skymesh.com.au)

DO YOU HAVE A  
STORY TO TELL?  
OR A PHOTO?  
OR PERHAPS AN ARTWORK  
ABOUT MEEKATHARRA?



## CALLING FOR Submissions!

The Shire of Meekatharra will pay **\$100** for articles that  
are related to Meekatharra.

Send your submissions to PO Box 129, Meekatharra WA  
6642 or drop them in at the Shire office. Alternatively,  
you can email us at: [cdo@meekashire.wa.gov.au](mailto:cdo@meekashire.wa.gov.au)



# Christmas **2025/26** POOL HOURS

Wednesday	24th Dec	(Christmas Eve)	OPEN
Thursday	25th Dec	(Christmas Day)	OPEN
Friday	26th Dec	(Boxing Day)	OPEN
Saturday	27th Dec		OPEN
Sunday	28th Dec		OPEN
Monday	29th Dec		OPEN
Tuesday	30th Dec		OPEN
Wednesday	31st Dec		OPEN
Tuesday	1st Jan	(New Years Day)	OPEN



*Yes! We are open!!*



## Subscriptions

If you would like to subscribe to the Meekatharra Dust, contact us to find out more.

*Subscriptions are for a 12-month period, including postage. Alternatively, you can download a free copy from our website.*



75 Main Street



08 9980 0600



[shire@meekatharra.wa.gov.au](mailto:shire@meekatharra.wa.gov.au)